

*explore*  
**QUEENCREEK<sup>SM</sup>**



Queen Creek  
CHAMBER OF COMMERCE

# Talbot



PLUMBING SERVICES LLC

Give Your Trusted, Local Plumber a Call.

**480-808-4937**

We are putting serve back in service.





The Queen Creek Performing Arts Center  
is celebrating our 20<sup>th</sup> anniversary season!

We appreciate the support we've received during the past  
20 years in our development as one of the premier  
performing arts facilities in the east valley! We're excited  
for the future as we continue to grow through the next 20 years.

## CENTERSTAGE SERIES



**Nunsense**  
Jan. 11-13, 2024



**Broadway Showstoppers**  
Jan. 20, 2024



**The Rave-Ons**  
Feb. 10, 2024



**Guys and Dolls**  
Feb. 22-24, 2024



**Forever Young**  
March 23, 2024

## FAMILY THEATRE



**Willy Wonka Jr.**  
April 19-22, 2024



**The Wizard of Oz**  
June 28-July 1, 2024

**QCPAC.com • 480.987.SHOW (7469)**



queen creek performing arts center



@qc\_arts



qcpac



### ON THE COVER

Photo by Holli Ciipowski  
HK Photo Smiles

#### QUEEN CREEK CHAMBER OF COMMERCE

22246 S. Ellsworth Rd.  
Queen Creek, AZ 85142  
480-888-1709  
queencreekchamber.com

Photos Courtesy of  
**HK PHOTO SMILES**  
Owner: Holli Cipowski  
hkphotosmiles.com

A Publication of  
**INTERNATIONAL MINUTE  
PRESS OF GILBERT**  
Owner: Dave Rindfleisch  
impgilbert.net

Design by  
**EYEDEAL DESIGN AND  
ADVERTISING, LLC**  
Owner: Terri Shelow  
928-951-3788

# TABLE OF CONTENTS

History .....	6
Sites of Interest.....	10
Landmarks .....	12
Agritainment.....	16
Quick Facts .....	19
Shopping/Dining .....	20
Things to Do .....	24
Places of Worship .....	26
Map.....	28
Utilities and Services.....	31
Services & Health (QCPD, Fire & Medical) .....	32
Horseshoe Equestrian Park.....	34
Events .....	36
Water in the Desert.....	37
Schools.....	38
Chamber Directory .....	40



# WELCOME

## *explore* **QUEEN CREEK**

**W**hether you're brand new or have been here a few years, we want to help you discover all that our wonderful community has to offer. Visit us at [ExploreQueenCreek.com](http://ExploreQueenCreek.com) for our latest digital magazine for a behind the scenes look at some of Queen Creek's biggest attractions! And be sure to download our mobile app to find businesses, events and news around town.

You can also stop by and see us at the Visitor Center located at the Queen Creek Chamber of Commerce to get all kinds of ideas for summer activities and day trips! Queen Creek has earned recognition and awards on regional, state, and national levels, and it's been named "One of America's Friendliest Cities" by Forbes magazine. We hope you enjoy living here as much as we do!



SCAN ME!



Chris Clark

President & CEO  
Queen Creek Chamber of Commerce



WELCOME

# HISTORY



## **Queen Creek's Name**

The Town of Queen Creek's name originated over a hundred miles away. Up in the eastern mountains surrounding the Town of Superior, the land is rich with ore. One of the many mines that opened up in those mountains was the Silver Queen. At its base was a creek known as the Picket Post Creek, named after the oddly shaped mountain above it. When the Silver Queen Mine opened for production, the name of the Picket Post Creek was changed to Queen Creek. That creek runs down from the mountains, past the

mine, through the Queen Creek Canyon, into the area surrounding the present-day Town of Queen Creek.

Before the scattered farm community was called Queen Creek, it had a different name. The area was known as Rittenhouse because of the railroad spur located near Rittenhouse and Ellsworth roads. People used to flag down the train to get a ride into Phoenix. As the community grew, and the use of the railroad stop diminished, the community changed its name and took on the name Queen Creek.



run with water through the Town of Queen Creek. And in the event of a 100-year flood, the washes and creeks will be important to keep the floodwater from damaging homes and property.

## ***Heritage Reflects Ties to the Land***

Agriculture and the bounty of the land continue to support the foundation upon which Queen Creek plans and builds its future. The fertile valley below the San Tan Mountains offered a safe haven for the early Indian communities and the homesteaders who farmed and ranched along Queen Creek Wash. Citrus, cotton, pecans, vegetables, and other crops still provide for area families, and the wash is a key element in the Town's plan for future recreational trails and open space.

By the time Arizona became a state in 1912, a true community had been formed in Queen Creek. Residents established traditions of neighborliness and rural fun. Some remember street dances, dips in local swimming holes, and sleeping under the stars during the

summer. The general store, church, and post office served as community gathering places, a practice still alive today. Many of the Town's founding families still choose Queen Creek as their home. Their names- Ellsworth, Power, Sossaman, Hawes, Combs, and Schnepf- on area roads

help keep Queen Creek's heritage alive. Town events remain popular.

The Town's 4th of July celebration evokes fond memories for many residents. In 1946, local farmers Raymond and Thora Schnepf invited family and friends to celebrate the holiday with swimming, barbecue, and fireworks at their home. Raymond flew to Texas to purchase fireworks, which were unavailable in Arizona. The event was later taken over by Schnepf Farms.



Today, the Town's General Plan calls for the preservation of the Queen Creek Wash and the Sonoqui Wash as public trails and open space. These washes are usually dry and home to many kinds of birds and wildlife. There might have been a time when the washes and the creeks throughout the valley had more water in them more often than they do today, but early in the 20th Century, a series of dams and reservoirs changed the waterways in the southwest. During the rainy season, and when the dams release water from the reservoirs, the creek beds and washes will

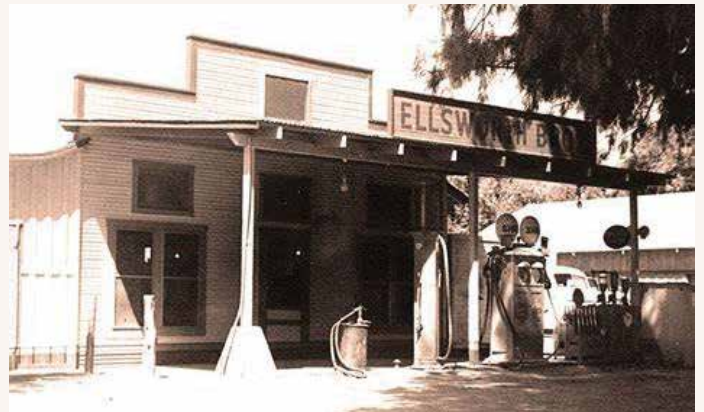
Longtime residents also remember the switch at Rittenhouse and Ellsworth roads where they could flag down a train, called a dinky, and hop aboard for a ride into Mesa, Tempe, Phoenix, or Tucson. Nearby, the Ellsworth family-built housing for farm workers and a general store where workers used their script pay to shop for goods.

In the 1920s, Queen Creek experienced an influx of immigrants who had moved from Mexico to work as miners in southern Arizona. They picked the local cotton crop by hand until the cotton gin came to Queen Creek during the 1920s. In the 1940s, former German prisoners of war from the P.O.W. camp in Queen Creek and Philippine immigrants joined farm laborers in local fields.

Today Queen Creek is preparing for new additions to its rich cultural diversity. The rapid expansion experienced by nearby cities in the 1980s continues today. The residents face inevitable growth, and seek to preserve the Town's friendly, small-town spirit while providing economic and recreational opportunities and a high quality of life.



*Faith Sossaman's 2nd grade class at Rittenhouse Elementary School circa 1932.*



*The San Tan Historical Society is dedicated to the preservation, restoration and education related to Chandler Heights, Combs, Higley and Queen Creek history.*



Ever wondered how Power, Sossaman, Hawes, and Ellsworth roads got their names? Who was Rittenhouse? Where was the first school? What was Frank Lloyd Wright's connection to the San Tan area? How did the community benefit from the German POWs? Who was the man on the mountain? Who started the Queen Creek Potato Company in 1932?

Find the answers to these questions and more at the San Tan Historical Society Museum. San Tan Historical Society Museum is located on the southeast corner of Queen Creek and Ellsworth Roads in Queen Creek. The museum is open to the public free of charge every Saturday from 9 a.m. to 1 p.m. Everyone is encouraged to take a few minutes to see the new displays, visit with the volunteers and browse the gift shop. For questions or more information, please call 480-987-9380. Tours available upon request.



***Tours available upon request.***

**San Tan Historical Society**

20425 S. Ellsworth Road  
Queen Creek, AZ 85142

**480-987-9380**

Hours: Free to the public on  
Saturdays 9 a.m. - 1 p.m.  
santanhistory@yahoo.com



***A Perpetual Care  
Cemetery & Mausoleum***  
*Established 2013 | Family Owned*

***Helping Family's Establish a Peaceful  
Final Place of Rest Since 2013***

***How Do You Want to be Remembered?***

*Whatever your answer is, it involves a lot of big decision making. Preplanning your funeral and establishing family plots now before the need arises puts you in charge of how you will be remembered and allows you to lock-in fees at today's rates.*

*Whether your visit is for immediate need or Advance Planning our licensed and dedicated family counselors are ready to assist you according to your wishes.*



**(480) 987-2488 | [www.SanTanMemorial.com](http://www.SanTanMemorial.com) | 22425 E. Cloud Rd. | Queen Creek, AZ 85142**



# SITES OF INTEREST

## OUR LADY OF GUADALUPE

The first Catholic Church building in Queen Creek is located on the north side of Ocotillo, 3/8 mile west of Ellsworth Road. It's the two narrow stained-glass windows that may have first attracted your attention as you passed by the weathered building across from Our Lady of Guadalupe in recent years. Even obscured by afternoon shadows, their beauty often enticed a second look. They have since been removed and placed on display in Our Lady of Guadalupe Church.

## QUEEN CREEK TOWN HALL

The building that currently serves as town services began as a Church of Jesus Christ of Latter-day Saints. It held its first service on Mother's Day, Sunday, May 13, 1951.

## DESERT WELLS STAGE STOP

Located just north of Chandler Heights Road on the east side of Sossaman Road, this site is reported to have been a small spur stop for the Arizona Stage Company, founded in 1868. The stop provided water, shade, and protection for stages from Florence via Olberg and on to Mesa.

## GOLD MINE

A short hike from the south end of Ellsworth Road will take you to the entrance of what used to be a 200-foot tunnel, now sealed for safety. The Gold Mine Mountain area was the site of many mining claims, including one by a Mr. Ebert from Mesa. Midway through the tunnel, Mr. Ebert reportedly found a gold vein that was 6-8 feet long. By the time equipment arrived to mine the gold, the vein had shifted to a fault line that could not be located again.





## **MANSEL CARTER & MARION KENNEDY GRAVESITE**

Mansel came to the Queen Creek area in 1948 with his prospecting buddy, Marion. They set up camp about 5 miles south of town in what is currently San Tan Mountain Regional Park. They never struck it rich, but they lived the life they wanted. Mr. Kennedy passed away in 1960, and Mansel buried him near their camp. Mr. Carter was buried next to his friend in 1987.

## **SCHNEPF FARMS**

Located five miles southeast of town, the area was purchased by Jack and Maude Schnepf in 1941. Their oldest son Raymond and his wife Thora were newly married, and

they moved to what was called “the home place,” while the rest of the family continued to live in Mesa.

By 1945 most of the family members were living on the farm. They were some of the first to buy a cotton picker, put in cement ditches and dig sumps to catch and recycle wastewater. Jack and Raymond invented and manufactured the aluminum irrigation tube.

Schnepf Farms is well known today for its family-oriented events and celebrations. If you have an opportunity, visit the Country Store.



DESERT WELLS  
STAGE STOP

SAN TAN  
HISTORICAL  
SOCIETY

# LANDMARKS

## 01 **POW CAMP**

During World War II, a prisoner of war (POW) camp was established on the north side of the railroad from 1942 to 1945. German POW's were used for farm labor, and a doctor at the camp was known to have occasionally treated local residents.



## 02 **ELLSWORTH BROTHERS FARMS**

In 1928, the Rittenhouse property was sold to Leo Ellsworth, who lived on the north side of Ocotillo Road. He and his brothers formed The Ellsworth Brothers Farms, an operation that soon consisted of cotton, large acreages of farm produce, cattle, sheep, and a dairy herd. Leo is credited with bringing in the first phone line to Queen Creek. The Ellsworth Store was located on the southwest corner of Ellsworth and Ocotillo roads.



## 03 **HAWES HOMESTEAD**

Ernest E. Hawes started farming in Queen Creek in the 1930's. The original homestead was on the south side of Chandler Heights Road, north of the Sonoqui Wash, just west of what is now Hawes Road. An old adobe house still stands on the property.



## 04 **POWER FARMS**

In 1917, J.O. Power moved to the Queen Creek area with his brother, Bernard (Buck). The homestead consisted of 320 acres and was located a half mile west of Sossaman Road on Ocotillo. More land was purchased on the west side of Power Road and a new home was built in 1938.





## 05 **SOSSAMAN HOMESTEAD**

Jasper Sossaman, his mother, and his brother Lee moved to the homestead in 1919 after his father died. It consisted of 320 acres on what is now the S.W. corner of Sossaman and Ocotillo Roads. Jasper (Jap) began working for Charlie Rittenhouse, operating and maintaining the diesel engines that powered the pumps used to irrigate Queen Creek Farms.



## 06 **GERMANN HOMESTEAD**

In 1914, everyone but John and Mathilda Germann knew that it was impossible to farm on the desert of Arizona. The Germanns purchased a relinquishment of 480 acres from a discouraged homesteader and established their home and pumping plant. Ivan Cluff purchased the Germann property in 1947 and formed a partnership with Stan Turley to farm the land.



## 07 **RITTENHOUSE RANCH**

By 1924, the Queen Creek Farms Company was well established. The Rittenhouse wells typically pumped 2150 gallons of water per minute and were 400 feet deep. The availability of water made Charles Rittenhouse's 1,000 acres of farmland very productive.



## 08 **POZOS DE SONOQUI**

The Hohokam lived in small villages, using irrigation to raise crops of corn, bean, and cotton until around AD 1450. Evacuation of the Pozos de Sonoqui site uncovered a number of pit houses, artifacts and other features of significance.

**CB COLDWELL BANKER | REALTY**

**QUEEN CREEK SPECIALIST  
REAL ESTATE AGENT**

Get more for your home!  
Put my local expertise to work for you!



Scan for my  
Seller's Guide.



**LOCAL SPECIALIST  
BRENDA BRANDHORST**  
(480) 398-0015 | <https://brendabsellsaz.com>

Not intended to solicit currently listed properties.



## RETIREMENT STRATEGIES

Our firm specializes in helping individuals develop sound retirement strategies. We offer personalized, hands-on service. We educate our clients about financial concepts and products, and take the mystery out of investing, insurance, estate conservation, and preserving wealth.

We understand the many challenges of retirement today and know the biggest concern for many is outliving their money. We focus on money management, as well as other issues that are critical to your financial well being."



**480-687-7400 • [andersonwealth.org](http://andersonwealth.org)**



**Seniors  
Helping  
Seniors®**

**Providing Companionship  
& In-Home Care Services  
for Seniors by Seniors**



We are proud to provide companionship and in-home care for seniors in Chandler, Gilbert and Queen Creek and communities throughout the East Valley!

**Let's connect!**


-  [SHSEastValley.com](http://SHSEastValley.com)
-  **480 • 534 • 7413**
-  [mike@shseastvalley.com](mailto:mike@shseastvalley.com)  
[julie@shseastvalley.com](mailto:julie@shseastvalley.com)



**Copper  
for the USA.  
Opportunity  
for Pinal  
County.**

[florencecopper.com](http://florencecopper.com) @florencecopper



**Taseko**



# Making Queen Creek Sweeter!



NOTHING *bundt* CAKES®

**Queen Creek**

20952 South Ellsworth Loop Rd, Ste E-1, Queen Creek, AZ 85142 • (480) 616-2536

# AGRITAINMENT

## **SCHNEPF FARMS 24810 S. RITTENHOUSE ROAD (480) 987-3100**

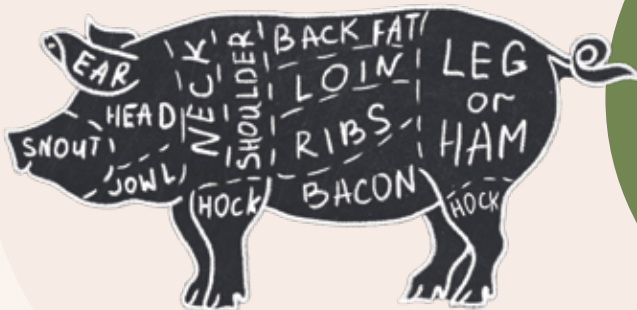
This fourth-generation family farm is the largest organic peach grower in Arizona and a must-do in the Phoenix area. If planning a day trip, make sure to visit the website and see what's happening that week on the farm. Guests may be able to experience everything from peach picking to watching a historical re-enactment, enjoying a classic car show or an antique craft fair, fireworks, one of the unique seasonal farm festivals, ice skating, or just picking veggies in the u-pick garden. Designated an Arizona Treasure by the Governor, Schnepf Farms is open 10 months a year (closed July 5 through Labor Day). Seasonal events include the Pumpkin & Chili Party (October), Winter Wonderland (December), the Peach Blossom Festival (February), Dinner Down the Orchard (Spring), Easter Egg-citement, and the 4th of July Fireworks Celebration.

***Agritainment is the combination of agriculture and entertainment.***



## **THE PORK SHOP 3359 E. COMBS ROAD (480) 987-0101**

The Pork Shop is home to the best pork in the country. From fresh cuts of pork to seven types of smoked bacon, this third-generation farm also sells a collection of fresh sausages, snack sticks, lunch meats and more. Their gourmet sausages include green chili, potato, beer brats, andouille, and jalapeno flavors – as well as a line of cheese sausages and brats.





**OLIVE MILL**  
**25062 S. MERIDIAN ROAD**  
**(480) 888-9290**

Arizona's only family-owned and operated working olive mill and farm, where olives are grown and pressed for the production of high-quality extra virgin olive oil. Experience their Olive Oil 101 class (offered hourly) and enjoy complimentary tastings of oils, olives, and vinegars.

Visitors are invited to dine at the Mill's Tuscan-inspired eatery featuring fresh gourmet sandwiches, paninis as well as soups, salads, gelato, and fresh roasted espresso from Infusion Coffee. Relax in their olive grove with libations at The Pit, featuring specialties from the grill.



**HAYDEN FLOUR MILL AT**  
**SOSSAMAN FARMS**  
**22100 S. SOSSAMAN ROAD**  
**(480) 557-0031**



Taste Arizona history at Hayden Flour Mills, a family-owned flour mill focused on native seeds and growing hand cultivated heritage grains with minimal processing. Sossaman Farms has been growing wheat for more than 100 years in Queen Creek and visitors can enjoy a full-sensory culinary experience that starts with a tour of their milling operation. Hayden Flour Mills showcases flavorful grain and its importance to the American diet highlighting everything from artisan breads, pasta and wheat berries to Bourbon, craft brews, grain-based oils and more.  
 Retail store inside.

# Information about the Town General Plan

**The Queen Creek General Plan** serves as the Town's decision-making road map for future growth including new roads, parks, shopping and homes. It contains a vision supported by goals, strategies, and actions to guide Town development, support a sustainable and robust economy, provide quality recreation, and effectively conserve Queen Creek's natural resources. The Plan was developed with extensive input from the community to ensure it embraces the vision of Queen Creek. The General Plan provides decision-making guidance to the Town to ensure that future growth proceeds in a manner consistent with that vision.

State law requires cities and towns with more than 2,500 residents to update their General Plan every 10 years; this General Plan updates the adopted 2008 General Plan.

## PLAN VISION

Queen Creek is a unique community known for its friendly, hometown atmosphere, and strong sense of agricultural heritage. This culture is woven throughout the community's neighborhoods, businesses, and recreational opportunities. The Town General Plan provides for a range of land uses and opportunities that are consistent with the desired community character. The strategic vision of the community aims to continue the environment of "convenience of the city, comfort of the country."

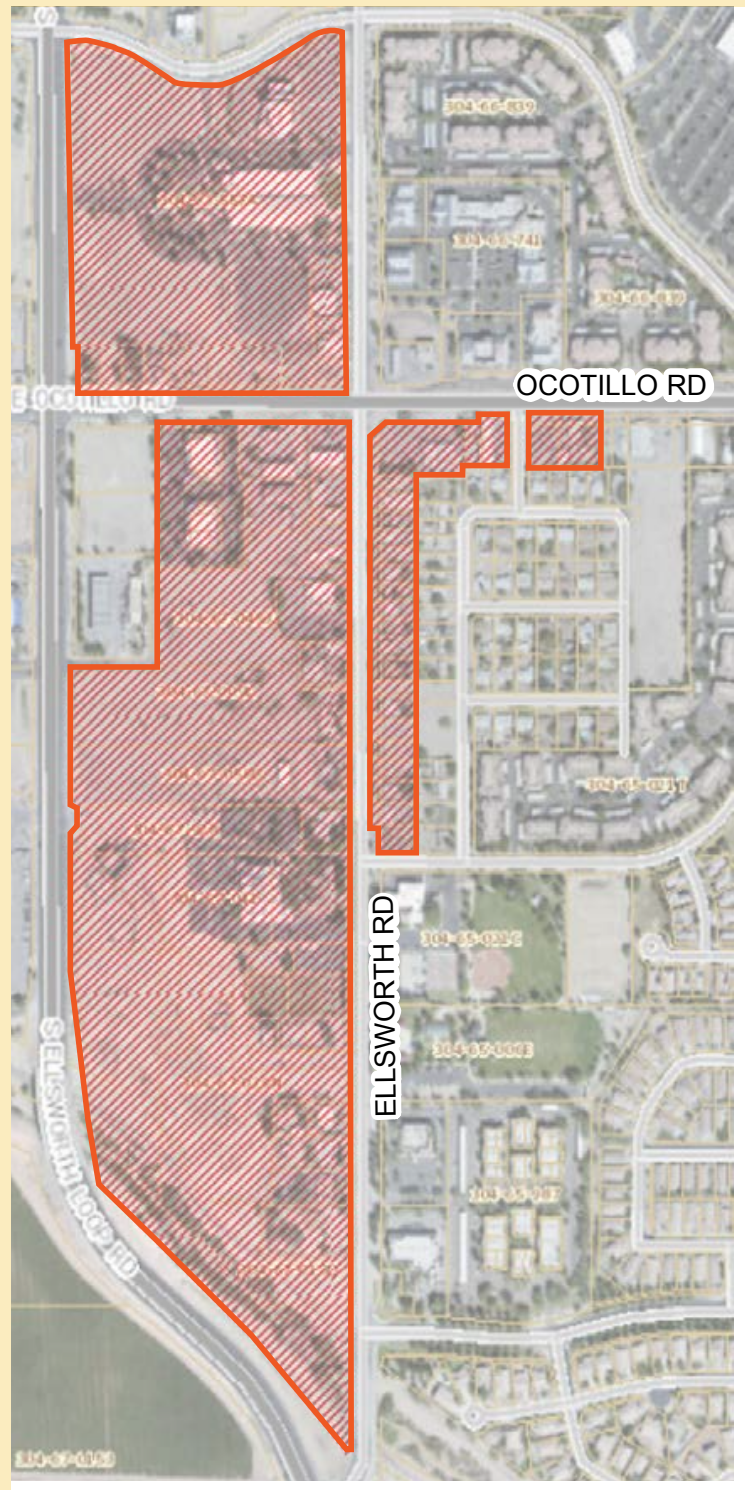
For more information about the Town of Queen  
Creek General Plan visit [plangc.com](http://plangc.com)

## DOWNTOWN CORE

The Downtown Core extends from south of the Community Center along Ellsworth Road to the Queen Creek Wash, and is bound on the west side by Ellsworth Loop Road. It encompasses nearly 900 acres offering commercial, entertainment and housing options. The focus of this area is to create a vibrant, active district in

the heart of the Town Center that complements the culture and heritage of the community and provides a range of venues that celebrate all that is unique to Queen Creek.

For more information about the Downtown Core visit [investtheqc.com](http://investtheqc.com).





# QUICK FACTS

**YEAR INCORPORATED** ..... 1989

**POPULATION** ..... 68,500  
(estimate as of June 30, 2021)

**MEDIAN HOME VALUE** ..... \$350,700  
(source: Maricopa County Assessor's)

**MEDIAN INCOME** ..... \$105,729  
(source: U.S. Census Bureau, American Community Survey,  
latest 1 year estimate)

**MEDIAN AGE** ..... 34.1

**AVERAGE HOUSEHOLD SIZE** ..... 3.49

**ANNUAL DAYS OF SUNSHINE** ..... 330

**PLANNING AREA** ..... 72 square miles

**ELEVATION** ..... 1,400 feet

**ANNUAL AVERAGE RAINFALL** ..... 9.8 inches

**AVERAGE TEMPERATURES** (High/Low Fahrenheit)

..... January 66°/40°

..... April 85°/55°

..... July 107°/82°

..... October 92°/61°

**Have a Bachelor's Degree or Higher** .... 37.7%

# SHOPPING & DINING



**01 Queen Creek Marketplace**  
(SWC Ellsworth Loop and Rittenhouse Rd) Queen Creek Marketplace including major retail stores like Target, Bath and Body Works, Kohls and dining from Chick-fil-A, Sauce Pizza and Wine, and Barrio Queen.

**02 QC District**  
(SEC Ellsworth Loop and Rittenhouse Rd)  
QC District is a collection of health wellness stores, national retail anchors like HomeGoods and Sprouts, unique and traditional restaurants including Menchie's Frozen Yogurt, Original Chopshop and Red Robbin.

**03 QC Fiesta**  
(SEC Ellsworth Loop and Maya Rd)  
QC Fiesta includes Planet Fitness, a collection of salons, unique and traditional restaurants like Five Guys, Jereamiah's Italian Ice and Sidewalk Coffee & Bagel Co.

**04 Queen Creek Crossroads and Heritage Square**  
(SEC of Ellsworth & Rittenhouse Rd)  
Queen Creek Crossroads and Heritage Square is anchored by Goodwill, and fast-food restaurants like Wendy's and Salad n Go.



**05 Ironwood Safeway Center**  
(NWC Ironwood and Ocotillo Rd)  
Ironwood Safeway Center anchored by Safeway and includes Culvers' and Taco Bell.

**06 Shops at Terravella**  
(NEC Queen Creek and Ellsworth Rd)  
Shops at Terravella (NEC Queen Creek Rd and Ellsworth Rd) includes Whataburger, Drizzle Donut Co and many other small, local businesses.

**07 Cornerstone**  
(NEC and NWC Rittenhouse and Ocotillo Rd)  
Cornerstone (NEC and NWC of Rittenhouse Rd and Ocotillo Rd) spans across two corners and is anchored by Wal-Mart, Harbor Freight, Staples and includes many restaurants like Uncle Bear's, Dunkin Donuts, and more!

**08 Basha's Plaza**  
(SWC Power and Chandler Heights Rd)  
Basha's Plaza (SWC of Power Rd & Chandler Heights Rd) is home to stores like Basha's and Queen Creek Running Company, and local restaurants Papa Murphy's, Skippy's Grill & Cantina, and Bosa Donuts.

**09 Power Marketplace II**  
(NEC and SEC of Power and Rittenhouse Rd)  
Power Marketplace II (NEC and SEC of Power & Rittenhouse Roads) is anchored by a Home Depot, and restaurants Dunkin Donuts, Taco Bell and Starbucks.

**10 Queen Creek Village Center**  
(NEC of Ellsworth and Ocotillo Rd)  
Queen Creek Village Center (N/ NEC of Ellsworth & Ocotillo roads) is in the heart of downtown is the Queen Creek Village Center which is a collection of boutiques, unique restaurants like Sushi Creek, and Eggs TC.

**11 Queen Creek Station**  
(NEC of Ellsworth and Walnut Rd)  
Queen Creek Station (NEC Ellsworth and Walnut Roads) contains shopping anchor Costco, Black Rock Coffee Bar and dental companies.

**12 Vineyard Town Center**  
(NWC Combs Rd and Gantzel Rd)  
Under construction is Vineyard Town Center, and will have major tenants Sprouts and Target, and many places to eat.

**13 NWC & NEC of Ellsworth Rd**  
and Riggs Rd has major tenants Fry's, FatCats, and unique and traditional restaurants including Seven Brother's Burgers, Twisted Sugar, and Ike's Sandwiches.





# ENROLL IN YOUR NEIGHBORHOOD SCHOOL

When you choose QCUSD schools, you choose...



A+ Awards of Excellence Schools



Nationally-Ranked Athletics and Arts



Exemplary Principals



Certified Teachers



Award-Winning Enrichment Programs



College & Career Exploration



Safe and Secure Campuses



FREE All-Day Kindergarten

FREE bus transportation for in-boundary students  
Preschool, Before-care and After-care options

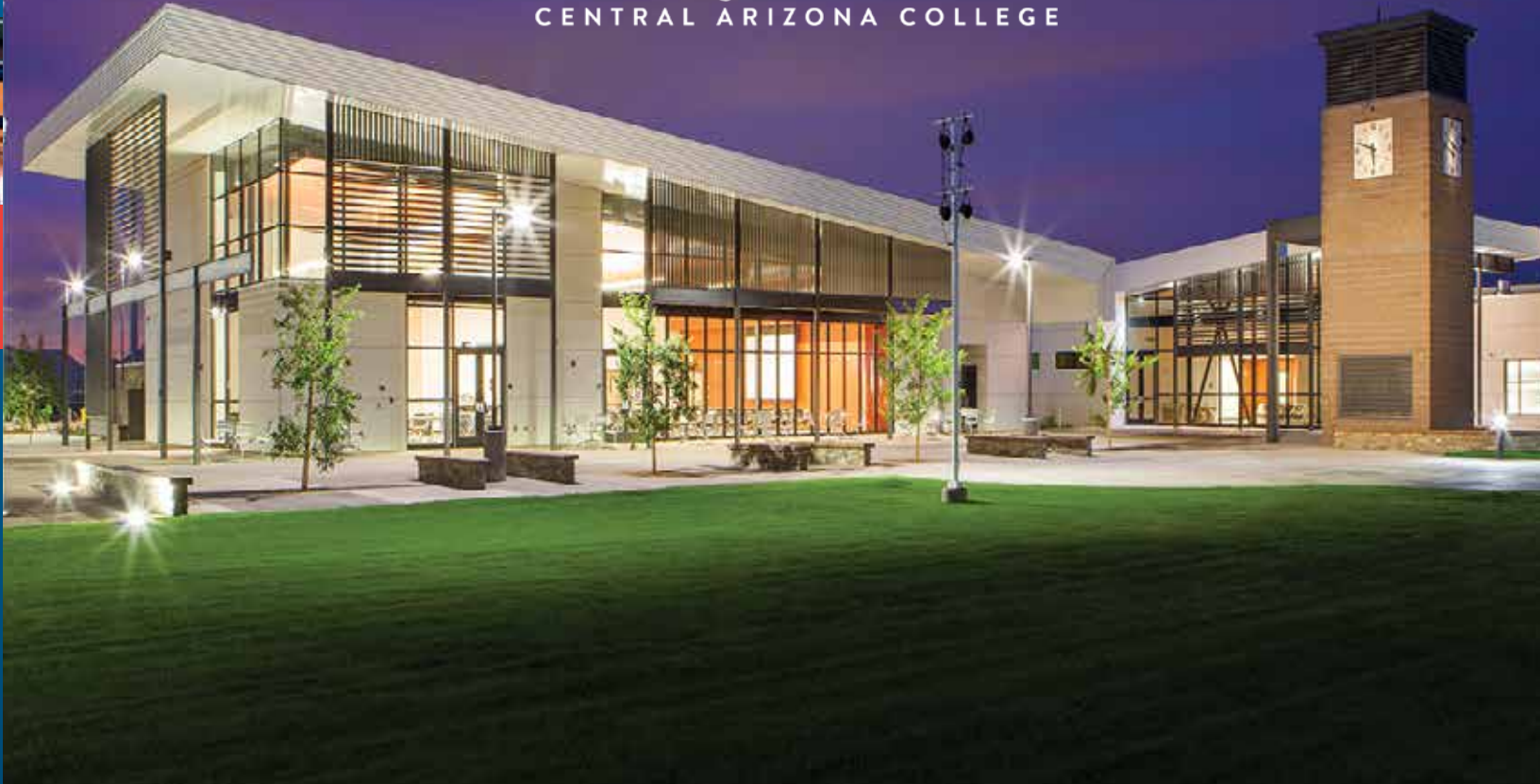


SCAN THE CODE OR VISIT  
[QCUSD.ORG/NEIGHBORHOOD-SCHOOL](https://qcusd.org/neighborhood-school)



**Queen Creek**  
Unified School District





**Central Arizona College's San Tan Campus  
offers degrees, certificates, university transfer  
pathways, community events and more.**

**WE ARE LOW COST,  
HIGH QUALITY EDUCATION!**



**Central  
Arizona  
College**

**CAC San Tan Campus  
3736 E. Bella Vista Rd.  
San Tan Valley, AZ 85143**

**CENTRALAZ.EDU**



# THINGS TO DO

From outdoor recreation to the Horseshoe Park and Equestrian Centre, to the many parks and trails in Queen Creek there are a variety of opportunities for outdoor exploration, and family fun.



## **DESERT MOUNTAIN PARK:**

22201 S. Hawes Rd., Queen Creek, AZ 85142  
7 a.m. - 10 p.m.

A 29-acre park with multi-purpose fields, little league fields, two playgrounds, one interpretive playground, volleyball and basketball courts, access to wash trails, and picnic ramadas.

## **FOUNDERS' PARK:**

22407 S. Ellsworth Rd., Queen Creek, AZ 85142  
7 a.m. - 10 p.m.

An 11-acre park neighborhood park for community gathering and host to many special events including Founders' Day. This park features a splash pad, playground, skate park, softball field, and basketball courts.

## **SKATE PARK AT FOUNDERS' PARK:**

22407 S. Ellsworth Rd., Queen Creek, AZ 85142  
7 a.m. - 9:30 p.m.

## **Splash Pad at Founders' Park**

March, April, Sept, Oct: 10 a.m. - 6 p.m.  
May-August: 9 a.m. - 7 p.m.  
Nov-Feb: Closed  
22407 S. Ellsworth Rd., Queen Creek, AZ 85142

## **Mansel Carter Oasis Park**

7 a.m. - 10 p.m.  
Lake at Mansel Park: 7 a.m. - 10 p.m.  
19535 E. Appleby Rd., Queen Creek, AZ 85142  
A 48-acre park with multi-purpose and baseball fields, two playgrounds (one inclusive), 5 acre fishing lake, volleyball and basketball courts, skate park, splash



pad, three fitness pods, and wash trail access. Mansel Carter Oasis Park phase II is anticipated to open early 2024, and will include 6 tennis courts, 6 sand volleyball courts, 4 pickleball courts, pump track, restroom building, and passive green space.

### Splash Pad at Mansel Park:

7 a.m. - 9:30 p.m.

Wheel Friendly Plaza: 7 a.m. - 9:30 p.m.

19535 E. Appleby Rd., Queen Creek, AZ 85142

### Pocket Park for Pups

22526 S. Ellsworth Rd., Queen Creek, AZ 85142

Mon, Wed-Sun: 7 a.m. - 10 p.m.

Tues: 12pm - 10pm

### Wash Trails:

S. Power Rd. and East Village Loop Rd. west of 215 St.

Sunrise to Sunset

Queen Creek offers multi-use trails along the Queen Creek and Sonoqui washes.

The trail system provides connectivity throughout Town and with our neighboring communities, including the San Tan Mountain Regional Park.

### San Tan Mountain Regional Park

6533 W. Phillips Rd., Queen Creek, AZ 85142

Sun-Thurs: 6 a.m. - 8 p.m.

Fri-Sat: 6 a.m. - 10 p.m.

### Horseshoe Park & Equestrian Centre

20464 E. Riggs Rd., Queen Creek, AZ 85142

8 a.m. - 10 p.m.

**Frontier Family Park** - anticipated to open in early 2024 Southwest corner of Ryan Rd and Signal Butte Rd This park will include 6 full size baseball/softball fields, 3 multi-purpose fields, 24 pickleball courts, 1 to 2 basketball courts, 1 to 2 sand volleyball courts, large playground similar to Mansel Carter Oasis Park, fishing lake, and a walking track around the entire park. Recreation/Aquatic Center - anticipated to open in late 2024. At

Frontier Family Park Recreation center will include basketball/volleyball/pickleball/multi-use courts, fitness floor, fitness rooms for group fitness, large conference/event room, multi-use classrooms, teen room, childcare, and more. Aquatic center will include competition/lap pool, zero depth entry play pool, lazy river, slides, space for birthday parties, and locker room/showers.

### Recreation/Aquatic Center



–anticipated to open in late 2024

At Frontier Family Park

Recreation center will include basketball/volleyball/pickleball/multi-use courts, fitness floor, fitness rooms for group fitness, large conference/event room, multi-use classrooms, teen room, childcare, and more. Aquatic center will include competition/lap pool, zero depth entry play pool, lazy river, slides, space for birthday parties, and locker room/showers.





# PLACES OF WORSHIP

## **Sun Valley Community Church - Queen Creek**

20271 E. Rittenhouse Rd., Queen  
Creek, AZ 85142  
(480) 508-4700

## **Queen Creek Bible Church**

20913 E. Ocotillo Rd., Queen Creek, AZ 85142  
(480) 987-3991

## **Gateway Church of Christ**

22705 S. Ellsworth Rd., Queen Creek, AZ 85142  
(480) 497-6125

## **Rock Point Church**

24759 S. Power Rd., Queen Creek, AZ 85142  
(480) 988-5391

## **Our Lady of Guadalupe Catholic Church**

20615 E. Ocotillo Rd., Queen Creek, AZ 85242  
(480) 987-0315

## **Calvary Chapel**

19248 E. San Tan Blvd., Queen Creek, AZ 85142  
(480) 988-2984

## **Song of Life United Methodist Church**

20164 S. Sossaman Rd., Queen Creek, AZ 85142  
(480) 641-1200

## **Central Christian - Queen Creek**

22505 E. Ocotillo Rd., Queen Creek, AZ 85142  
(480) 722-2200

## **Heart Cry Church**

9339 W. Hunt Hwy,  
Queen Creek, AZ 85142  
(480) 784-3825

## **Mountain View Church**

4815 W. Hunt Hwy,  
Queen Creek, AZ 85142  
(480) 677-2100

## **The Church of Jesus Christ of Latter-day Saints**

22035 E. Ocotillo Rd.,  
Queen Creek, AZ 85242  
(480) 888-1813

## **Saving Grace Lutheran Church and Preschool**

24498 S Ellsworth Rd  
Queen Creek AZ 85142  
info@savinggracelc.org  
(480) 888-9673





2024

# QUEEN CREEK MAP



Queen Creek  
CHAMBER OF COMMERCE

## Where to Find More Info

[www.explorequeencreek.org](http://www.explorequeencreek.org)

[www.queencreekchamber.com](http://www.queencreekchamber.com)

[www.queencreekaz.gov](http://www.queencreekaz.gov)



Loop 202

Mesa

SR 24

Phoenix-Mesa  
Gateway Airport



Queen Creek

Gilbert

Hayden  
Flour Mill

Schneff  
Farms

Queen Creek  
Olive Mill

Queen Creek Wash

Sonorita Wash

WILLIAMS FIELD RD

POWER RD

SOSSAMAN RD

PECOS RD

GERMANY RD

GERMANY RD

QUEEN CREEK RD

ELUDON PKWY

CRISMAN RD

QUEEN CREEK RD

DE WINDEN RD

FINNA RD

NEWPORT RD

SCHWEP RD

HASH KNEE CANYON RD

POWER RD

CHANDLER HEIGHTS RD

HAIRIES RD

ELLSWORTH RD

VALE LOOP RD

OCOTILLO RD

22ND ST

22ND ST

GAUNTZ RD

PECK CREEK DR

COMBS RD

SPRINGFIELD DR

RECKER RD

CHANDLER HEIGHTS RD

HAIRIES RD

ELLSWORTH RD

VALE LOOP RD

OCOTILLO RD

22ND ST

22ND ST

GAUNTZ RD

PECK CREEK DR

COMBS RD

SPRINGFIELD DR

RECKER RD

CHANDLER HEIGHTS RD

HAIRIES RD

ELLSWORTH RD

VALE LOOP RD

OCOTILLO RD

22ND ST

22ND ST

GAUNTZ RD

PECK CREEK DR

COMBS RD

SPRINGFIELD DR

RECKER RD

CHANDLER HEIGHTS RD

HAIRIES RD

ELLSWORTH RD

VALE LOOP RD

OCOTILLO RD

22ND ST

22ND ST

GAUNTZ RD

PECK CREEK DR

COMBS RD

SPRINGFIELD DR

RECKER RD

CHANDLER HEIGHTS RD

HAIRIES RD

ELLSWORTH RD

VALE LOOP RD

OCOTILLO RD

22ND ST

22ND ST

GAUNTZ RD

PECK CREEK DR

COMBS RD

SPRINGFIELD DR

RECKER RD

CHANDLER HEIGHTS RD

HAIRIES RD

ELLSWORTH RD

VALE LOOP RD

OCOTILLO RD

22ND ST

22ND ST

GAUNTZ RD

PECK CREEK DR

COMBS RD

SPRINGFIELD DR

RECKER RD

CHANDLER HEIGHTS RD

HAIRIES RD

ELLSWORTH RD

VALE LOOP RD

OCOTILLO RD

22ND ST

22ND ST

GAUNTZ RD

PECK CREEK DR

COMBS RD

SPRINGFIELD DR

RECKER RD

CHANDLER HEIGHTS RD

HAIRIES RD

ELLSWORTH RD

VALE LOOP RD

OCOTILLO RD

22ND ST

22ND ST

GAUNTZ RD

PECK CREEK DR

COMBS RD

SPRINGFIELD DR

RECKER RD

CHANDLER HEIGHTS RD

HAIRIES RD

ELLSWORTH RD

VALE LOOP RD

OCOTILLO RD

22ND ST

22ND ST

GAUNTZ RD

PECK CREEK DR

COMBS RD

SPRINGFIELD DR

RECKER RD

CHANDLER HEIGHTS RD

HAIRIES RD

ELLSWORTH RD

VALE LOOP RD

OCOTILLO RD

22ND ST

22ND ST

GAUNTZ RD

PECK CREEK DR

COMBS RD

SPRINGFIELD DR

RECKER RD

CHANDLER HEIGHTS RD

HAIRIES RD

ELLSWORTH RD

VALE LOOP RD

OCOTILLO RD

22ND ST

22ND ST

GAUNTZ RD

PECK CREEK DR

COMBS RD

SPRINGFIELD DR

RECKER RD

CHANDLER HEIGHTS RD

HAIRIES RD

ELLSWORTH RD

VALE LOOP RD

OCOTILLO RD

22ND ST

22ND ST

GAUNTZ RD

PECK CREEK DR

COMBS RD

SPRINGFIELD DR

RECKER RD

CHANDLER HEIGHTS RD

HAIRIES RD

ELLSWORTH RD

VALE LOOP RD

OCOTILLO RD

22ND ST

22ND ST

GAUNTZ RD

PECK CREEK DR

COMBS RD

SPRINGFIELD DR

RECKER RD

CHANDLER HEIGHTS RD

HAIRIES RD

ELLSWORTH RD

VALE LOOP RD

OCOTILLO RD

22ND ST

22ND ST

GAUNTZ RD

PECK CREEK DR

COMBS RD

SPRINGFIELD DR

RECKER RD

CHANDLER HEIGHTS RD

HAIRIES RD

ELLSWORTH RD

VALE LOOP RD

OCOTILLO RD

22ND ST

22ND ST

GAUNTZ RD

PECK CREEK DR

COMBS RD

SPRINGFIELD DR

RECKER RD

CHANDLER HEIGHTS RD

HAIRIES RD

ELLSWORTH RD

VALE LOOP RD

OCOTILLO RD

22ND ST

22ND ST

GAUNTZ RD

PECK CREEK DR

COMBS RD

SPRINGFIELD DR

RECKER RD

CHANDLER HEIGHTS RD

HAIRIES RD

ELLSWORTH RD

VALE LOOP RD

OCOTILLO RD

22ND ST

22ND ST

GAUNTZ RD

PECK CREEK DR

COMBS RD

SPRINGFIELD DR

RECKER RD

CHANDLER HEIGHTS RD

HAIRIES RD

ELLSWORTH RD

VALE LOOP RD

OCOTILLO RD

22ND ST

22ND ST

GAUNTZ RD

PECK CREEK DR

COMBS RD

SPRINGFIELD DR

RECKER RD

CHANDLER HEIGHTS RD

HAIRIES RD

ELLSWORTH RD

VALE LOOP RD

OCOTILLO RD

22ND ST

22ND ST

GAUNTZ RD

PECK CREEK DR

COMBS RD

SPRINGFIELD DR

RECKER RD

CHANDLER HEIGHTS RD

HAIRIES RD

ELLSWORTH RD

VALE LOOP RD

OCOTILLO RD

22ND ST

22ND ST

GAUNTZ RD

PECK CREEK DR

COMBS RD

SPRINGFIELD DR

RECKER RD

CHANDLER HEIGHTS RD

HAIRIES RD

ELLSWORTH RD

VALE LOOP RD

OCOTILLO RD

22ND ST

22ND ST

GAUNTZ RD

PECK CREEK DR

COMBS RD

SPRINGFIELD DR

RECKER RD

CHANDLER HEIGHTS RD

HAIRIES RD

ELLSWORTH RD

VALE LOOP RD

OCOTILLO RD

22ND ST

22ND ST

GAUNTZ RD

PECK CREEK DR

COMBS RD

SPRINGFIELD DR

RECKER RD

CHANDLER HEIGHTS RD

HAIRIES RD

ELLSWORTH RD

VALE LOOP RD

OCOTILLO RD

22ND ST

22ND ST

GAUNTZ RD

PECK CREEK DR

COMBS RD

SPRINGFIELD DR

RECKER RD

CHANDLER HEIGHTS RD

HAIRIES RD

ELLSWORTH RD

VALE LOOP RD

OCOTILLO RD

22ND ST

22ND ST

GAUNTZ RD

PECK CREEK DR

COMBS RD

SPRINGFIELD DR

RECKER RD

CHANDLER HEIGHTS RD

HAIRIES RD

ELLSWORTH RD

VALE LOOP RD

OCOTILLO RD

22ND ST

22ND ST

GAUNTZ RD

PECK CREEK DR

COMBS RD

SPRINGFIELD DR

RECKER RD

CHANDLER HEIGHTS RD

HAIRIES RD

ELLSWORTH RD

VALE LOOP RD

OCOTILLO RD





# *Come, Stay and Enjoy!*



Queen Creek  
CHAMBER OF COMMERCE



Pull Out Map Inside



# UTILITIES/SERVICES

## ELECTRIC/GAS

Salt River Project  
Srpnet.com  
602-236-8888

## NATURAL GAS

Southwest Gas  
Swgas.com  
877-860-6020

## PROPANE

Amerigas  
Amerigas.com  
623-937-9227

Ferrell Gas  
Ferrellgas.com  
888-337-7355

## WATER

Town Of Queen Creek  
<https://www.queencreekaz.gov/departments/utilities/water>  
480-358-3450

## CABLE/INTERNET:

Cox Communications  
Cox.com

Mediacom Communications  
mediacomcable.com

Century Link  
<https://www.centurylink.com>

**MEDICARE**

*Proudly serving Arizona for 25 years. We go beyond your expectations to offer superior service throughout the insurance process!*

**DENTAL**

**WORKSITE**

**VISION**

**MEDICAL**

**DISABILITY**

**LIFE**

**LONG-TERM CARE**



**~ EXPERTISE ~**

- ◆ Group Employee Benefit Solutions
- ◆ Strategic Planning
- ◆ Medicare Consulting and Expanded Benefit Solutions
- ◆ Over 70 Years of Combined Team Insurance Expertise
- ◆ Employer Sponsored Insurance

480-839-6100 | [www.ebxaz.com](http://www.ebxaz.com) | [info@ebxaz.com](mailto:info@ebxaz.com)  
[@ebxaz](mailto:@ebxaz) | 2730 S Val Vista Dr. Ste 132 Gilbert, AZ

# SERVICES & HEALTH

## HOSPITALS

### BANNER IRONWOOD MEDICAL CENTER

37000 N Gantzel Rd.  
Queen Creek, AZ 85142  
(480) 394-4000  
bannerhealth.com

### DIGNITY HEALTH ARIZONA GENERAL HOSPITAL

1419 W Hunt Hwy,  
San Tan Valley, AZ 85143  
(480) 245-4300  
dignityhealth.org

### MERCY GILBERT MEDICAL CENTER

3555 S. Val Vista Dr., Gilbert, AZ 85297  
(480) 728-8000  
dignityhealth.org

## PRIMARY CARE

### BANNER HEALTH CENTER QUEEN CREEK

21772 S Ellsworth Loop, Queen  
Creek, AZ 85142  
(480) 512-3700

### BANNER HEALTH CLINIC AT BANNER IRONWOOD CAMPUS

37000 N Gantzel Rd, Ste. 201,  
Queen Creek, AZ 85142  
(480) 394-4469  
Bannerhealth.com

## URGENT CARES

### BANNER URGENT CARE

35945 N Gary Rd,  
San Tan Valley, AZ 85143

### BANNER URGENT CARE

40773 N Ironwood Drive  
San Tan Valley, AZ 85140  
(480) 827-5760

## FIRE SERVICES

### QUEEN CREEK FIRE & MEDICAL

#### FIRE STATION 1

20678 E. Civic Parkway  
Queen Creek, AZ 85142

#### FIRE STATION 2

24787 S. Sossaman Rd  
Queen Creek, AZ 85142

#### FIRE STATION 3

19159 E. Queen Creek Rd  
Queen Creek, AZ 85142

#### FIRE STATION 4

20155 S. Signal Butte Rd  
Queen Creek, AZ 85142

#### FIRE STATION 5

245 W. Combs Rd  
Queen Creek, AZ 85142



## POLICE SERVICES

### QUEEN CREEK POLICE DEPARTMENT ADMINISTRATION

20727 E. Civic Parkway  
Queen Creek, AZ 85142  
Lobby Hours: Monday -  
Thursday 7am - 6pm



NonEmergency: 480-358-3500





# Complete benefits. *Real* monthly savings.

Devoted Health's Medicare Advantage plans start at just **\$0 a month.**



**Want to learn more?  
Call Pauline Hall, Devoted Health  
licensed sales agent.**

**480-292-6650**

**Enrollment may be limited to specific times of the year unless you meet certain criteria, such as qualifying for a Special Election Period.** Devoted Health is an HMO and/or PPO plan with a Medicare contract. Our D-SNPs also have contracts with State Medicaid programs. Enrollment in our plans depends on contract renewal. Devoted Health complies with applicable Federal civil rights laws and does not discriminate on the basis of race, color, national origin, age, disability, or sex. ATENCIÓN: Si habla español, tiene a su disposición servicios gratuitos de asistencia lingüística. Llame al 1-800-338-6833 (TTY 711). Y0142\_24L203\_M





# Horseshoe Park and Equestrian Centre

is a 38-acre equestrian facility here in Queen Creek. With about 150 shows per year, this spectacular park has been a great place to host events for almost 10 years. Featuring beautiful scenery, and a free community riding arena, it provides ample opportunity for equestrian events, as well as home shows, RV and car shows, concerts and weddings. The park is home to several prestigious organizations and events, including Arizona Cutting Horse Association, Arizona Quarter Horse Association, Arizona Thoroughbred Breeders Association, Art of the Cowgirl, Champagne Dressage Show, Cisco Productions, Cowboy Mounted Shooting Association, Roots N Boots Queen Creek, Southern Arizona Quarter Horse Association, and Vintage and Vino. For more information or to make a reservation, call (480) 358-3793.

## OCTOBER & MAY

### VINTAGE AND VINO

This shopping showcase features one-of-a-kind finds, treasures, local vendors, make-and-takes and more. Learn a few things from painting and décor pros and enjoy live acoustic music as you sip on a mimosa, glass of wine, craft beer, or a non-alcoholic beverage.

## OCTOBER THROUGH MAY

### ARIZONA CUTTING HORSE ASSOCIATION

Between October and May, the AZCHA hosts six different four to five-day events showcasing the best NCHA sanctioning cutting in the western United States.



## JANUARY

### ART OF THE COWGIRL

A gathering to celebrate cowgirls and their contributions to western lifestyle and culture and to raise funds to support up-and-coming artists to expand their knowledge and skills via fellowships with master artists in their field.

## MARCH

### ROOTS AND BOOTS QUEEN CREEK

Roots N' Boots Queen Creek is an annual event celebrating QC's rural heritage. Events and activities include PRCA Rodeo, bull riding, rodeo dance Friday and Saturday nights, carnival, Kids N' Kritters, Ranch Dressing, Extreme Teen, vendors, petting zoo, pony rides, and lots of free fun for the entire family.

# COMMUNITY EVENTS



## FOUNDERS DAY - SEPTEMBER

Come celebrate Queen Creek's heritage at this family-friendly community event in Founders' Park! Take part in competitions, enjoy great food, music, and entertainment, and experience a Battle of the Badge competition.

## TRUNK OR TREAT - OCTOBER

Trunk or Treat provides a safe environment for families to enjoy an inexpensive evening of Halloween fun in a festival atmosphere! Children trick-or-treat by going from car trunk to car trunk on "Trunk or Treat Street" to get their bag filled with goodies.

## PANCAKE BREAKFAST - NOVEMBER

Residents are invited to "wake up to what's cooking in Town" at the free pancake breakfast. Hosted by the Queen Creek Town Council, this is an opportunity for residents to learn what's happening in the Town and be QC neighborly while enjoying a delicious breakfast featuring hot IHOP pancakes and freshly brewed Starbucks coffee. Town representatives will share information on upcoming projects and

answer questions. In addition to learning about new businesses coming to Town, upcoming roadway projects and what's happening with your public safety departments. Peek inside construction, utility, and emergency vehicles during Touch-a-Truck.

## HOLIDAY FESTIVAL AND PARADE - 1ST SATURDAY OF DECEMBER

Come join the festivities including a tree lighting ceremony, attractions, food, and craft vendors, as well as an appearance by Santa Claus himself! Hosted by Queen Creek Chamber of Commerce & Kiwanis Club.

## KIDS' CHRISTMAS CAR SHOW AND TOY DRIVE - DECEMBER

Celebrate the holiday season at this classic car show and toy drive to benefit less fortunate children with toys for Christmas hosted by the Kiwanis Club of Queen Creek.

## SPRING INTO QC - MARCH

Hop on over to Spring into QC! This signature event celebrates the Queen Creek families and is complete with live entertainment, vendors, and the always popular egg hunt. There's fun for everyone!

***For exact dates and more information visit  
[explorequeencreek.com](http://explorequeencreek.com)***



# Water in the Desert

**A**rizona leads the nation in comprehensive water supply management from water supply projects, to innovative programs, mandatory conservation programs and use of reclaimed water. Urban areas of the state a 100-year water supply must be proven before land can be developed. All current Town of Queen Creek residential water customers have a certificate of 100-year assured water supply.

*For more information about Arizona's water supply visit [arizonawaterfacts.com](http://arizonawaterfacts.com)*

## HOW DO WE GET OUR WATER?

Queen Creek and Greater Phoenix area has access to four sources of water: water from in-state rivers and streams, Colorado River water, reclaimed water, and groundwater. Tap water begins as rain and snow in the forest. As the snow melts, it flows down mountains and into the Salt and Verde Rivers, where it's carried through a series of lakes. These lakes are reservoirs, or places to store water.

Water is collected in these reservoirs and then released through dams. Dams allow Salt River Project to control the flow of water so they can manage floods and store water. Water then moves into the Phoenix area through a system of canals. Water is delivered to

local treatment plants and treated to meet water quality standards. Once treated, the water is pumped through underground pipes into homes.

*The Town of Queen Creek uses seventeen source wells to deliver water to its residents.*



**SRP**  
Delivering water and power™

## BUILDING OUR COMMUNITY, TOGETHER.

Building a strong community requires a united effort. That's why SRP is proud to support organizations like the Queen Creek Chamber of Commerce that are providing programs and services designed to work for the greater good — and, ultimately, create a more vibrant future for us all.

[srp.net/community](http://srp.net/community)



# SCHOOLS

## PRIMARY AND SECONDARY EDUCATION:

### Primary and Secondary Education:

Queen Creek Unified School District  
Phone Number: (480) 987-5935  
[qcusd.org](http://qcusd.org)

### American Leadership Academy

Phone Number: (480) 420-2101  
[alaschools.org](http://alaschools.org)

### Benjamin Franklin Charter School

Phone Number: (480) 987-0722  
[bfcsaz.com](http://bfcsaz.com)

### East Valley Institute of Technology

Phone: (480) 461-4000  
[evit.com](http://evit.com)

### Heritage Academy Gateway

Phone: (480) 461-4400  
[heritageacademyaz.com](http://heritageacademyaz.com)

### Chandler Unified School District

Phone: (480) 812-7000  
[cusd80.com](http://cusd80.com)

### J.O. Combs Unified School District

Phone: (480) 987-5300  
[jocombs.org](http://jocombs.org)

### Higley Unified School District

Phone: (480) 279-7000  
[husd.org](http://husd.org)







## HIGHER EDUCATION

### **Arizona State University**

525 E. University Dr.,  
Tempe, AZ 85281  
Phone: (480) 965-2100

### **Central Arizona College**

8470 N. Overfield Rd.,  
Coolidge, AZ 85128  
Phone: (520) 494-6400

### **Chandler-Gilbert Community College**

2626 E. Pecos Rd.,  
Chandler, AZ 85225-2499  
Phone: (480) 732-7000

### **Communiversity @ Queen Creek**

21740 S. Ellsworth Rd.,  
Queen Creek, AZ 85142  
Phone: (480) 384-9971

# BUSINESS DIRECTORY

## ACCOUNTING

### MMTAXMAN

(562) 310-5311  
1910 S. Stapley Drive  
Mesa, Arizona 85204  
<http://mmtaxman.com>

### ROCK SOLID TAX AND ACCOUNTING LLC

(480) 322-8207  
8830 E. Germann Rd., Bldg. 27 Suite 8  
Mesa, Arizona 85212  
<http://www.rocksolidtaxandaccounting.com>

## ADVERTISING

### DUELFORCE PROMOTIONS

(307) 630-6644  
<https://www.duelforcepromo.com>

### VALPAK OF METRO PHOENIX

(707) 349-5378  
<https://www.valpak.com/advertise/local/phoenix>

## AGTRITAINMENT

### SCHNEPF FARMS

(480) 987-3333  
24810 S. Rittenhouse Rd  
Queen Creek, Arizona 85142  
<http://www.schnepffarms.com>

### SOSSAMAN FARMS

(480) 987-9670  
22200 S Sossaman Rd  
Queen Creek, Arizona 85142  
<https://www.facebook.com/sossamanfarms>

## AIR CONDITIONING/HEATING

### ANGEL AIR COOLING & HEATING, LLC

(480) 298-0353  
20427 E. Ocotillo Rd  
Queen Creek, Arizona 85142  
[www.angelaircooling.com](http://www.angelaircooling.com)

### SEMPER FI HEATING AND COOLING

(928) 257-8672  
6555 E Southern Ave  
Suite 1106  
Mesa, Arizona 85206  
<http://semperfiheatingcooling.com>

## TK HEATING AND AIR

(480) 769-0458  
[tkcools.com](http://tkcools.com)

## WE FIX IT HOME SERVICES

(480) 698-0123  
[www.wefixitazair.com](http://www.wefixitazair.com)

## AIRPORT

### PHOENIX-MESA GATEWAY AIRPORT

(480) 988-7618  
5835 S Sossaman Rd  
Mesa Arizona 85212  
<https://www.gatewayairport.com>

## APARTMENTS

### ACERO QUEEN CREEK

(480) 847-5525  
20588 S Ellsworth Loop Rd  
Queen Creek, Arizona 85142  
<https://www.aceroqueenecreek.com>

## APARTMENTS 55+

### AMBERLIN QUEEN CREEK

(480) 613-2097  
270 W Ocotillo Rd  
Queen Creek, Arizona 85140  
[www.amberlinqueenecreek.com](http://www.amberlinqueenecreek.com)

## ARCHITECTURE

### SKETCH ARCHITECTURE COMPANY

(480) 668-8015  
2454 E Southern Ave #110  
Mesa, Arizona 85204  
[www.sketcharchitecturecompany.com](http://www.sketcharchitecturecompany.com)

## AUTO GLASS REPAIR

### MORENO AUTO GLASS

(480) 742-8999  
[Morenoautoglass.com](http://Morenoautoglass.com)

## AUTO REPAIR

### AZ AUTO REPAIR-MIDWEST MOTOR SPORTS, LLC

(480) 888-0430  
21616 S Crismon Rd  
Queen Creek, Arizona 85142  
<https://azautorepairqc.com>



**AUTOMOTIVE SERVICES****CHRISTIAN BROTHERS AUTOMOTIVE**

(480) 783-3022  
 21143 E Rittenhouse Rd  
 Queen Creek, Arizona 85142  
<http://locations.cbac.com/queen-creek>

**DANA BROS AUTOMOTIVE & DIESEL SERVICE**

(602) 419-6824  
 8607 E Pecos Rd Bldg #5  
 Mesa, Arizona 85212  
<http://danabros.com>

**POWER TAGS, TITLES & MORE**

(480) 677-3132  
 3125 W Hunt Hwy, Suite 104  
 San Tan Valley, Arizona 85142  
<http://www.powertagstitlesandmore.net>

**ROADRUNNER COLLISION CENTER**

(480) 882-2949  
 7361 S 89th Pl  
 Mesa, Arizona 85212  
<http://www.rccphx.com>

**BAKERY****NOTHING BUNDT CAKES**

20952 S Ellsworth Lp Rd Suite #100, Queen  
 Creek, AZ 85142  
 (480) 616-2536  
<http://www.nothingbundtcakes.com>

**BANKS, CREDIT UNIONS, LOANS  
MORTGAGES****ACADEMY BANK**

(602) 430-6975  
 7150 E Camelback Rd  
 Suite 100  
 Scottsdale, Arizona 85251  
<https://www.academybank.com>

**BMO HARRIS BANK**

(480) 882-3000  
 21479 S Ellsworth Rd  
 Queen Creek, Arizona 85142  
<http://www.bmoharris.com>

**DESERT FINANCIAL CREDIT UNION**

(602) 433-7000  
 1725 W Hunt Hwy  
 San Tan Valley, Arizona 85143  
<https://www.desertfinancial.com>

**DESERT FINANCIAL CREDIT UNION-**

Queen Creek  
 (602) 433-7000  
 40950 N Ironwood Rd  
 Queen Creek, Arizona 85142  
<https://www.desertfinancial.com>

**FIRST TECH FEDERAL CREDIT UNION**

(503) 327-1227  
[www.firsttechfed.com](http://www.firsttechfed.com)

**GATEWAY BANK**

(480) 250-4353  
 6860 E Warner Rd  
 Mesa, Arizona 85212  
<https://gcbaz.com>

**GLOBAL CREDIT UNION**

(480) 356-5987  
 1130 S Signal Butte Road  
 Mesa, Arizona 85209  
<http://www.alaskausa.org>

**GUARANTEED RATE AFFINITY**

(480) 710-7395  
 6402 E Superstition Springs Blvd Ste 100  
 Mesa, Arizona 85204  
<https://people.grarate.com/ron-valerio-655436>

**MOUNTAIN AMERICA CREDIT UNION**

(480) 862-4892  
 22024 S Ellsworth Loop  
 Queen Creek, Arizona 85142  
<https://www.macu.com>

**NEXA MORTGAGE**

(507) 530-3888  
 3100 W Ray Rd Suite 201, Office 209  
 Chandler, Arizona 85226  
[loanswithaj.com](http://loanswithaj.com)

**UNISON BANK**

(701) 471-9437  
 1835 E Pecos Rd  
 Gilbert, Arizona 85295  
<http://www.unisonbank.com>

**WALICK & VOLK MORTGAGE**

(480) 516-6236  
 1640 S Stapley Drive Suite 221  
 Mesa, Arizona 85204  
<http://stacyneal.wvmbmesa.com>

## BEAUTY SERVICES

### BOWTOX JUNKY'S PLLC

(602) 562-5923  
21455 S Ellsworth Rd, Suite 45  
Queen Creek, Arizona 85142  
<http://bowtoxjunkysaz.com>

### BRIDGETTES BEAUTY BAR

(408) 691-0273  
8950 E Germann Rd Unit#15  
Mesa, Arizona 85212  
<http://bridgettesbeautybar.com>

### SUGAR SUGAR

(480) 367-8427  
21152 E Rittenhouse Rd  
Suite 104  
Queen Creek, Arizona 85142  
<https://www.mysugarsugar.com>

## BLINDS AND SHUTTERS

### BLOOMIN' BLINDS OF

Chandler Gilbert  
(614) 370-8496  
<https://www.bloominblinds.com/chandler-gilbert>

## STYLE WISE SHUTTERS AND BLINDS

(480) 450-1081  
<https://www.stylewises shuttersandblinds.com>

## BOOKKEEPING

### LEAH JOHNSON, LLC

(406) 396-0528  
<http://bit.ly/leahjohnsonllc>

### EOS PROFESSIONAL IMPLEMENTER

(602) 228-4373  
<http://www.eosworldwide.com/scott-goodrich>

## CAR DEALERSHIPS

### SAN TAN FORD

(480) 821-3200  
1429 E Motorplex Loop  
Gilbert, Arizona 85297  
[www.santanford.com](http://www.santanford.com)

## CAR WASH

### QUICK QUACK CAR WASH

(520) 231-1206  
41090 N Ironwood Dr  
Queen Creek, Arizona 85140  
<http://www.dontdrivedirty.com>

# Speed into amazing.

- ▶ Fast download speeds available from 100 Mbps up to 1 GIG<sup>†</sup>
- ▶ Faster than advertised download speeds (*FCC Twelfth Measuring Broadband America Fixed Broadband Report*)
- ▶ Powerful whole-home WiFi
- ▶ 99.99% network reliability<sup>^</sup>

**xtream.com**  
**844-XTREAM3**



<sup>†</sup>Download speeds may vary and a monthly usage allowance applies. Services may not be available in all areas. <sup>^</sup>2023 Mediacom Executive Summary Reliability Report. Xtream powered by Mediacom is a registered trademark of Mediacom Communications Corporation.



**QUICK QUACK CAR WASH**

(888) 772-2792  
 148 E Combs Rd  
 San Tan Valley, Arizona 85140  
<http://www.dontdrivedirty.com>

**CEMETERY****SAN TAN MEMORIAL GARDENS LLC**

(480) 589-2642  
 22425 E Cloud Rd  
 Queen Creek, Arizona 85142  
<http://santanmemorial.com>

**CHIROPRACTIC****CHIOTRENDZ FAMILY CHIROPRACTIC**

(480) 999-4700  
 18610 E Rittenhouse Rd A101  
 Queen Creek, Arizona 85142  
<http://www.chiotrendz.com>

**VALLEY FAMILY CHIROPRACTIC**

(480) 447-2433  
 18933 E San Tan Blvd. Suite 125  
 Queen Creek, Arizona 85142  
<http://valleyfamilychiroaz.com>

**COMPLETE REHAB**

(480) 828-8706  
 22719 S Ellsworth Rd  
 Queen Creek, Arizona 85142  
<https://www.complerehabqc.com>

**CHURCH****CHRIST THE VICTOR**

(520) 723-4220  
 6173 E Arizona Farms Rd  
 Florence, Arizona 85132  
<http://christthevictor.net>

**CONNECTIVE CHURCH**

(480) 382-9044  
 22424 S Ellsworth Loop #2106  
 Queen Creek, Arizona 85142  
<https://connective.church>

**SAVING GRACE LUTHERAN CHURCH AND PRESCHOOL**

(480) 888-9673  
 24414 S Ellsworth Rd  
 Queen Creek, Arizona 85142  
<https://www.savinggracelc.org>

**SONG OF LIFE UNITED METHODIST CHURCH**

(480) 641-1200

20164 S Sossaman Rd  
 Queen Creek, Arizona 85142  
[www.songoflifeumc.org](http://www.songoflifeumc.org)

**MOUNTAIN VIEW CHURCH**

(480) 677-2100  
 4815 W Hunt Hwy  
 Queen Creek, Arizona 85142  
<http://mv.church>

**ST. MICHAEL THE ARCHANGEL CATHOLIC CHURCH**

(520) 723-6570  
 25394 N Poseidon Rd  
 Florence, Arizona 85132  
<http://www.stmichaels77.org>

**THE CHURCH OF JESUS CHRIST OF LATTER DAY SAINTS**

(801) 471-7947  
<https://www.churchofjesuschrist.org>

**COMMERCIAL CLEANING****ELDORADO CLEANING LLC**

(480) 737-4324  
<https://Www.EldoradoCleaningLLC.com>

**CONSTRUCTION****ADOLFSON & PETERSON CONSTRUCTION**

(480) 313-0977  
 5002 S Ash Ave  
 Tempe, Arizona 85282  
<https://www.a-p.com>

**CHASSE BUILDING TEAM**

(480) 425-7777  
 230 S. Siesta Lane  
 Tempe, Arizona 85288  
<http://www.chasse.us>

**COMPLETE FIRE PROTECTION INC.**

(480) 987-8200  
 19415 East Germann Road  
 Mesa, Arizona 85212  
<https://www.completefireaz.com>

**CORE CONSTRUCTION, INC.**

(602) 494-0800  
 3036 E Greenway Rd  
 Phoenix, Arizona 85032  
<https://coreconstruction.com>

**SUNDT CONSTRUCTION**

(480) 293-3000  
 2620 South 55th Street

Tempe, Arizona 85282  
<https://www.sundt.com>

## COUNSELING

### REMEDY HEALING & WELLNESS

(602) 363-9607  
<https://remedyhealingandwellness.com>

## COUNTRY CLUB

### ENCANTERRA COUNTRY CLUB

(480) 677-8165  
36460 N Encanterra Drive  
Queen Creek, Arizona 85142  
<https://www.mytrilogylife.com/encanterra>

## CPA

### US&Co CPAs PLLC

(206) 962-9279  
<https://usco-cpa.com>

## DENTIST

### DENTAL CARE OF CITRUS GROVES

(602) 616-1477  
20826 E Riggs Road  
Queen Creek, Arizona 85142  
<http://dentalcareofcitrusgroves.com>

### DESERT CREEK DENTAL

(480) 861-0023  
20261 E Ocotillo Rd, Suite 120  
Queen Creek, Arizona 85142  
<http://www.desertcreekdental.com>

## DESSERT

### COLD STONE CREAMERY

(480) 840-3300  
7507 S Power Rd, Suite 104  
Queen Creek, Arizona 85142  
<https://www.coldstonecreamery.com/stores/21073>

### DAIRY QUEEN

(480) 816-7266  
20911 E Rittenhouse Rd  
Queen Creek, Arizona 85142  
<http://dairyqueen.com>

### JEREMIAH'S ITALIAN ICE

(480) 268-7793  
20784 E Victora Ln #107  
Queen Creek, Arizona 85142  
<https://jeremiahsice.com/locations/queen-creek-az>

### MENCHIE'S FROZEN YOGURT

(480) 784-3943  
21295 S Ellsworth Lp Rd Ste 104  
Queen Creek, Arizona 85142  
<http://menchies.com>

## EDUCATION

### AMERICAN LEADERSHIP ACADEMY

(480) 420-2101  
6913 E. Rembrandt Ave  
Suite 102  
Mesa, Arizona 85212  
<https://www.alaschools.org>

### ARIZONA STATE UNIVERSITY

(480) 727-1140  
6027 S. Sagewood Street  
Mesa, Arizona 85212  
<http://www.poly.asu.edu>

### CANYON STATE ACADEMY

(480) 987-2037  
20061 E Rittenhouse Rd  
Queen Creek, Arizona 85142  
<http://canyonstateacademy.com>

### CENTRAL ARIZONA COLLEGE

(520) 494-5485  
3736 E Bella Vista Road  
San Tan Valley, Arizona 85143  
<http://www.centralaz.edu>

### CHANDLER UNIFIED SCHOOL DISTRICT

(480) 812-7015  
1525 West Frye Road  
Chandler, Arizona 85224  
<https://www.cusd80.com>

### CHANDLER-GILBERT COMMUNITY COLLEGE (CGCC)

(480) 732-7075  
2626 E Pecos Rd  
Chandler, Arizona 85225  
<http://www.cgc.maricopa.edu>

### COMMUNIVERSITY AT QUEEN CREEK

(480) 384-4191  
21740 S Ellsworth Rd  
Queen Creek, Arizona 85142  
<http://queencreek.azcommuniversity.com/qc/default.shtml>

### EAST VALLEY INSTITUTE OF TECHNOLOGY

(480) 461-4105



1601 W. Main Street  
Mesa, Arizona 85201  
<http://evit.com>

### **GILBERT SCHOOL OF MUSIC**

(480) 805-8605  
709 W Ray Rd, Ste 3  
Gilbert, Arizona 85233  
<https://gilbertschoolofmusic.com>

### **J.O. COMBS UNIFIED SCHOOL DISTRICT**

(480) 987-5300  
43371 N. Kenworthy Rd.  
San Tan Valley, Arizona 85140  
[www.jocombs.org](http://www.jocombs.org)

### **LEADING EDGE ACADEMY**

(480) 655-6787  
4815 W Hunt Highway  
Queen Creek, Arizona 85142  
<http://www.leadingedgeacademy.com>

### **QUEEN CREEK UNIFIED SCHOOL DISTRICT**

(480) 987-5938  
20217 E. Chandler Heights Rd  
Queen Creek, Arizona 85142  
<http://www.qcusd.org>

### **RIDGEVIEW COLLEGE PREPARATORY HIGH SCHOOL**

(480) 360-4518  
1645 W. Skyline Drive  
San Tan Valley, Arizona 85142  
<https://www.ridgeviewcollegeprep.com>

### **SCHOOL OF ROCK - QUEEN CREEK**

(323) 823-6603  
<https://www.schoolofrock.com/locations/queencreek>

### **UNIVERSITY OF ARIZONA**

(520) 840-4878  
55 N Arizona Pl  
Chandler, Arizona 85225  
<https://www.arizona.edu>

### **ELECTRICIANS**

#### **AUXILIUM ELECTRIC**

(480) 269-1592  
[www.auxiliumelectric.com](http://www.auxiliumelectric.com)

### **ENTERTAINMENT**

#### **AS YOU WISH POTTERY**

(480) 410-4185

25166 S Ellsworth Rd., Suite A-105  
Queen Creek, Arizona 85142  
<https://www.asyouwishpottery.com>

### **DAVE & BUSTER'S**

(480) 212-1800  
21000 S Ellsworth Lp Rd  
Queen Creek, Arizona 85142  
<https://www.daveandbusters.com/us/en/home>

### **ELEVATE TRAMPOLINE PARK**

(480) 590-5729  
8946 E Germann Rd  
Mesa, Arizona 85212  
<http://www.elevatequeencreek.com>

### **PAINTING WONDERLAND**

(480) 912-2641  
22249 S Ellsworth Rd  
Queen Creek, Arizona 85142  
<https://www.paintingwonderland.com>

### **QUEEN CREEK PERFORMING ARTS CENTER**

(480) 987-5964  
22149 E. Ocotillo Road  
Queen Creek, Arizona 85142  
<http://www.qcpac.com>

### **THE SLUMBER SHACKS, LLC**

(480) 599-0421  
<http://theslumbershack.com>

### **EQUIPMENT RENTAL**

#### **PROLIFT RENTAL**

(480) 925-6190  
18329 East Navajo Drive  
Queen Creek, Arizona 85142  
<https://www.proliftrental.com>

### **EVENT RENTALS**

#### **AZ JOLLY JUMPERS**

(623) 792-3649  
3740 W Van Buren St, Suite 102  
Phoenix, Arizona 85009  
<https://www.azjollyjumpers.com>

#### **JOLT EVENT RENTALS**

(602) 919-1272  
<https://www.jolteventrentals.com>

## **FINANCIAL**

### **SAN TAN PLANNING AND INVESTMENTS**

(480) 586-3036  
1820 E Ray Rd, Suite B110  
Chandler, Arizona 85225  
<https://www.santanplanning.com>

### **ANDERSON WEALTH LLC**

(480) 206-2430  
2500 S Power Rd, Suite 223  
Mesa, Arizona 85209  
<http://www.andersonwealth.org>

### **APRICITY WEALTH MANAGEMENT**

(480) 799-8188  
4365 E Pecos Rd Ste 120  
Gilbert, Arizona 85295  
<http://www.apricitywealthmanagement.com/contact-1>

### **EDWARD JONES**

(480) 882-3610  
PO Box 26  
Higley, Arizona 85236  
<http://www.edwardjones.com>

### **RAYHONS FINANCIAL SOLUTIONS**

(480) 507-2425  
3335 E. Baseline Road, Suite C  
Gilbert, Arizona 85234  
<http://www.rayhonsfinancial.com>

### **WESTPAC WEALTH PARTNERS**

(208) 291-9168  
3707 E Southern Ave  
Mesa, Arizona 85209  
<https://www.westpacwealth.com>

### **PRIMERICA**

(480) 888-5769  
4365 E Pecos Rd, Suite 139  
Gilbert, Arizona 85295  
<http://www.primerica.com/bryanmcclure>

## **FIREARMS EDUCATION**

### **SAFE ARIZONA FIREARMS EDUCATION**

(480) 244-6315  
<https://www.safearizona.com>

## **FLOORING**

### **FLOOR COVERINGS INTERNATIONAL**

(480) 737-1585  
929 N Val Vista Drive #111

Gilbert, Arizona 85234  
[www.floorcoverings2u.com](http://www.floorcoverings2u.com)

## **FUNERAL HOME**

### **SAN TAN MOUNTAIN VIEW FUNERAL HOME & ADVANCE PLANNING**

(480) 888-2682  
21809 S. Ellsworth Road  
Queen Creek, Arizona 85142  
<http://www.santanmountainviewfuneralhome.com>

## **GOVERNMENT**

### **JACK SELLERS - MARICOPA COUNTY SUPERVISOR**

(602) 506-1776  
301 W. Jefferson, 10th Floor  
Phoenix, Arizona 85003  
<http://www.maricopa.gov/dist1>

## **GREEN PRODUCT**

### **SHAKLEE**

(602) 770-0232  
<http://www.greenqcmom.com>

## **HEALTH**

### **YOUNG FAMILY CARE HOMES**

(480) 888-0456  
19331 E Via De Palmas  
Queen Creek, Arizona 85142  
<https://www.youngfamilycarehomes.com>

### **TRI-CITY CARDIOLOGY**

(480) 835-6100  
36543 N Gantzel Rd Building 15 Suite 101  
San Tan Valley, Arizona 85140  
<https://tricitycardiology.com>

### **HEALTHY LIVING ADVENTURE**

(630) 404-7067  
<http://www.healthylivingadventure.com>

### **HORIZON HEALTH AND WELLNESS**

(480) 907-4767  
625 N Plaza Drive  
Apache Junction, Arizona 85120  
<http://www.hhwaz.org>

### **SPIRIT MOUNTAIN HEALING SERVICES**

(480) 988-2165  
18118 E. Chandler Heights Rd  
Gilbert, Arizona 85298  
<http://www.spiritmountainhealing.com>



**WOMENS HEALTH NOW, OB/GYN**

(480) 888-7271  
 21321 E Ocotillo Road, Suite 127  
 Queen Creek, Arizona 85142  
<http://www.womenshealthnow.net>

**HOME BUILDERS****MODERN SPLENDOR HOMES**

(480) 861-2771  
<http://www.mshaz.com>

**HOSPICE****HOSPICE OF THE VALLEY**

(602) 814-3694  
 1510 E. Flower Street  
 Phoenix, Arizona 85014  
<http://www.hospiceofthevalley.org>

**HOSPITALS****BANNER IRONWOOD MEDICAL CENTER**

(480) 394-4549  
 37000 North Gantzel Road  
 Queen Creek, Arizona 85140  
<http://www.bannerhealth.com>

**DIGNITY HEALTH MERCY GILBERT MEDICAL**

Center  
 (480) 728-8352  
 1750 E. Northrop Blvd, Suite 200  
 Chandler, Arizona 85286  
<http://www.dignityhealth.org/mercygilbert>

**HOTELS****FOUR POINTS BY SHERATON AT PHOENIX MESA GATEWAY AIRPORT**

(480) 579-2161  
 6850 E Williams Field Rd  
 Mesa, Arizona 85212  
<https://www.marriott.com/en-us/hotels/phxma-four-points-at-phoenix-mesa-gateway-airport/overview>

**HAMPTON INN BY HILTON QUEEN CREEK**

(480) 888-7474  
 20768 E Maya Rd  
 Queen Creek, Arizona 85142  
<https://www.hilton.com/en/hampton>

**INDUSTRIAL GAS****MATHESON GAS**

(800) 284-0481  
 11530 E Pecos Rd

Queen Creek, Arizona 85212  
[www.mathesongas.com](http://www.mathesongas.com)

**INSURANCE****A AND H INSURANCE, INC.**

(775) 300-3884  
 288 N Ironwood Dr, Suite 111  
 Apache Junction, Arizona 85120  
<http://www.aandhinsurance.com>

**COMPARION INSURANCE AGENCY**

(480) 308-5430  
 1620 S Stapley Dr, #120  
 Mesa, Arizona 85204  
<https://www.comparioninsurance.com/insurance-agent/arizona/mesa-082d/iestyn-dulais>

**DEVOTED HEALTH CARE**

(480) 292-6650  
 16435 N Scottsdale Rd, 285  
 Scottsdale, Arizona 85254  
<http://devoted.com>

**EMPLOYEE BENEFIT EXCHANGE, CORP.**

(480) 839-6100  
 2730 S. Val Vista Dr., Ste 132  
 Gilbert, Arizona 85295  
<http://www.ebxaz.com>

**FARM BUREAU FINANCIAL SERVICES**

(480) 279-1874  
 2509 S Power Rd #106  
 Mesa, Arizona 85209  
<https://nikkischaal.fbfsagents.com>

**HERNANDEZ ALLSTATE AGENCY**

(480) 969-7288  
 18521 E Queen Creek Rd  
 Suite 106  
 Queen Creek, Arizona 85142  
<https://agents.allstate.com/anthony-hernandez-queen-creek-az.html>

**HUB INTERNATIONAL**

(208) 680-6512  
 8777 N. Gainey Center Dr., Suite 100  
 Scottsdale, Arizona 85258  
<https://www.hubinternational.com>

**IFG INSURANCE**

(480) 864-2301  
 3303 S Lindsay Rd STE 103

Gilbert, Arizona 85297

<http://ifgtoday.com>

### **IHC SPECIALTY BENEFITS**

(605) 351-0485

<http://insuranceexperts.team>

### **ROHILLCO INSURANCE SERVICES**

(503) 636-0495

[www.rohillcoinsurance.com](http://www.rohillcoinsurance.com)

### **THE INSURANCE TEAM**

(480) 626-1860

22246 S Ellsworth Rd

Queen Creek, Arizona 85142

<http://www.theinsteadteam.com>

### **VECTOR EMPLOYER SOLUTIONS**

(480) 773-4651

<http://www.vectoremployersolutions.com>

## **SHIPPING**

### **CYCLONE SHIPPING, INC.**

(310) 809-8482

2816 E Sandy Ct

Gilbert, Arizona 85297

<http://www.cycloneshipping.com>

### **KIETEK**

(480) 218-4515

22380 S Scotland Ct

Queen Creek, Arizona 85142

<http://www.kietek.com>

## **IT SERVICES**

### **I FIX'EM IT, LLC**

(480) 599-7136

<https://ifixemit.com>

### **TRIPLE SOURCE TECHNOLOGIES, INC.**

(866) 987-3525

3317 S Higley Rd, Suite 109

Gilbert, Arizona 85297

<http://www.triplesourcetech.com>

## **JUNK REMOVAL**

### **DEBRIS ON WHEELS**

(480) 877-0502

<https://debrisonwheels.com>

## **LAWYERS**

### **AVID ESQ. GROUP LLC**

(480) 805-4357

4365 E Pecos Rd, Suite 121

Gilbert, Arizona 85297

<https://www.avidesq.com>

### **COPPER CREEK LAW**

(480) 252-1496

<http://www.coppercreeklaw.com>

### **HARRISON LAW, PLLC**

(480) 988-7407

4365 East Pecos Road

Suite 139

Gilbert, Arizona 85295

<http://www.harrisonlawaz.com>

### **QUEEN CREEK LAW FIRM**

(602) 529-6144

P.O. Box 1877

Queen Creek, Arizona 85142

<http://queencreeklawfirm.com>

### **RONEY BUSINESS LAW**

(682) 800-2993

85 W Combs Rd

Queen Creek, Arizona 85140

<http://www.roneybusinesslaw.com>

### **WILSON-GOODMAN LAW GROUP, PLLC**

(480) 503-9217

1760 East Pecos Road

Suite 315

Gilbert, Arizona 85225

<http://www.wgandf-law.com>

### **ZACHARY LAW GROUP**

(480) 389-3533

625 N Gilbert Rd, Suite #201

Gilbert, Arizona 85234

<http://zacharylawgroup.com>

## **MARKETING AGENCY**

### **BRENITS CREATIVE**

(917) 733-9574

[www.brenits.com](http://www.brenits.com)

### **DEBELLEVUE GLOBAL MARKETING AGENCY**

(970) 640-3314

<https://www.debellevueglobal.com>



**MASSAGE****ELEMENTS MASSAGE QUEEN CREEK**

(480) 300-4056  
 40930 N Ironwood Dr #106  
 Queen Creek, Arizona 85140  
<http://www.elementsmassage.com/queen-creek>

**MEDIA PRODUCTION****J2 MEDIA**

(602) 899-2242  
 575 W. Chandler Blvd, Suite 129  
 Chandler, Arizona 85225  
[j2media.tv](http://j2media.tv)

**MENTAL HEALTH****P TAYLOR CONSULTING**

(262) 207-4130  
 530 E. Hunt Hwy  
 Suite 103 #488  
 San Tan Valley, Arizona 85143  
<http://www.ptaylorconsulting.com>

**MERCHANT SERVICES****CLEARENT**

(480) 213-9968  
<http://clearent.com>

**DEPOSYT**

(954) 234-8903  
 930 E University Drive  
 Suite 202  
 Tempe, Arizona 85288  
<http://www.deposyt.com>

**MERITUM**

(602) 303-3442  
<http://www.meritumusa.com>

**METAL FABRICATOR****CMC STEEL ARIZONA**

(480) 396-7100  
 11444 E. Germann Rd.  
 Mesa, Arizona 85212  
<http://www.cmcsteelaz.com>

**MINING****FLORENCE COPPER**

(520) 374-3984  
 1575 W Hunt Hwy  
 Florence, Arizona 85132  
<http://www.florencecopper.com>

**MOVING SERVICES****TWO MEN AND A TRUCK**

(480) 559 8085  
 1916 S Gilbert Rd Suite 2  
 Mesa, Arizona 85204  
[twomenmesa.com](http://twomenmesa.com)

**MUSIC SCHOOLS****MUSICIANS MADE**

(480) 228-9789  
 18530 E. San Tan Blvd. , Suite 101  
 Queen Creek, Arizona 85142  
<http://www.musiciansmade.com>

**NETWORKING GROUP****GLOBAL SOCIETY FOR FEMALE ENTREPRENEURS**

(949) 445-9368  
<https://www.globalsocietyforfemaleentrepreneurs.org>

**NEWSPAPER****BELOCAL QUEEN CREEK**

(260) 437-7570  
<https://www.belocalpub.com/locations/queen-creek-belocal-5ee2>

**QUEEN CREEK TRIBUNE**

(602) 672-1447  
 1900 W Broadway Rd  
 Tempem Arizona 85282  
<http://www.queencreektribune.com>

**AcETech CONSULTING**

(480) 862-0288  
<https://acotech.ai>

**INDEPENDENT NEWSMEDIA**

(480) 580-2204  
<https://www.yourvalley.net/queen-creek-independent>

**NON PROFIT****AMERICAN LEGION POST 129**

(602) 568-7407  
 22246 S Ellsworth Rd  
 Queen Creek, Arizona 85142  
<http://www.queencreeklegion.com>

### **QUEEN CREEK ROTARY CLUB**

(602) 777-1164  
<https://rotaryclubqcc.com>

### **THE CHANGE PROJECT, LLC & THE DAF PROJECT (501C3)**

(602) 214-2787  
<http://www.thechangeproject.us>

### **UNITED FOOD BANK**

(480) 398-4464  
358 East Javelina Avenue  
Mesa, Arizona 85210  
<http://www.unitedfoodbank.org>

### **VITALANT**

(877) 258-4825  
1524 W 14th St  
Tempe, Arizona 85281  
[www.vitalant.org](http://www.vitalant.org)

### **FOR CHOSEN WARRIOR CANCER SUPPORT FOUNDATION**

(480) 485-7293  
<http://www.queencreekchamber.com>

### **HOUSE OF REFUGE**

(480) 988-9242  
6935 E Williams Field Rd  
Mesa, Arizona 85212  
<http://www.houseofrefuge.org>

### **SOUTHEAST VALLEY COMMUNITY ALLIANCE**

(480) 213-3705  
<https://www.svcaaz.org>

### **HOPE MENTAL HEALTH FOUNDATION**

(602) 318-0601  
<http://hopefoundationgives.org>

### **NOTARY**

#### **DESERT PEAKS NOTARY SERVICE**

(480) 250-8588  
<https://queencreekchamber.com/places/desert-peaks-notary-service>

### **ORTHODONTICS**

#### **PETERSON FAMILY ORTHODONTICS**

(480) 725-9272  
40615 N Gantzel Rd, Suite 107  
San Tan Valley, Arizona 85140  
<http://petersonfamilyortho.com>

### **PEST CONTROL**

#### **AFFORDABLE PEST CONTROL**

(480) 907-7913  
2769 E Combs Rd Bldg G2  
San Tan Valley, Arizona 85140  
<http://www.affordablepestservice.com>

#### **JB'S PEST CONTROL**

(425) 870-4725  
<http://jbspestcontrol.com>

#### **VARSITY TERMITE AND PEST CONTROL**

(602) 757-8252  
6056 E Baseline Rd Ste 122  
Mesa, Arizona 85206  
[www.varsitytermiteandpestcontrol.com](http://www.varsitytermiteandpestcontrol.com)

### **PHYSICAL THERAPY**

#### **FOOTHILLS SPORTS MEDICINE**

(920) 419-7452  
22719 S Ellsworth Rd, Building C Suite 101  
Queen Creek, Arizona 85142  
<https://foothillsrehab.com>

### **PLUMBING**

#### **JUST DRAINS**

(602) 759-0243  
<http://justdrainsaz.com>

#### **TALBOT PLUMBING SERVICES LLC**

(480) 241-5375  
<https://talbotplumbingservices.com>

### **POOL SERVICES**

#### **ARIZONA POOL SERVICE**

(480) 228-5743  
[www.arizonapoolservice.com](http://www.arizonapoolservice.com)

### **PORTABLE TOILETS**

#### **ARIZONA PORTABLES**

(404) 401-4561  
892 W 1st Ave  
Mesa, Arizona 85210  
<https://arizonaportables.com>

#### **WASTE RENTALS**

(480) 604-3727  
20221 E Mesquite St, Suite 1  
Mesa, Arizona 85142  
<http://www.wasterentals.com>



**PRESCHOOLS****AFC LITTLE LEARNERS PRESCHOOL**

(480) 440-4351  
 8743 E Pecos Rd #119  
 Mesa, Arizona 85212  
<https://www.facebook.com/littlelearnersaz>

**WonderWise Preschool**

(480) 276-3015  
 20365 E Ocotillo  
 Queen Creek, Arizona 85142  
<http://wonderwisepreschool.com>

**PRINTING AND MAILING****INTL MINUTE PRESS GILBERT**

(480) 507-8255  
 1140 N Gilbert Rd  
 Gilbert, Arizona 85234  
<https://www.impgilbert.net>

**MINUTEMAN PRESS QC**

(480) 457-1668  
 22375 S Scotland Ct, 103  
 Queen Creek, Arizona 85142  
[az213.minuteman.com](http://az213.minuteman.com)

**THE UPS STORE # 4920**

(480) 987-2297  
 18521 E Queen Creek Rd  
 Queen Creek, Arizona 85142  
<http://www.theupsstorelocal.com/4920>

**THE UPS STORE 7576**

(480) 332-4354  
 24871 South Ellsworth Road  
 Ste A-100  
 Queen Creek, Arizona 85142  
<http://www.theupsstore.com/7576>

**PROPERTY MANAGEMENT****PMI SAN TAN**

(480) 908-2250  
[pmisantan.com](http://pmisantan.com)

**REAL ESTATE****WE BUY HOUSES ARIZONA, LLC**

(480) 444-2274  
 1959 S. Power Rd  
 Ste 103-256  
 Mesa, Arizona 85206  
<https://www.webuyhousesarizona.com/we-buy-houses-in-queen-creek-az>

**BILL ADAMS, COLDWELL BANKER REALTY**

(602) 575-5935  
<http://www.billadamshomes.com>

**BRENDA BRANDHORST, COLDWELL BANKER REALTY**

(480) 398-0015  
<https://BrendaBSellsAz.com>

**CATHY FOX, COLDWELL BANKER COMMERCIAL REALTY**

(602) 316-7978  
<http://cbcworldwide.com>

**FERGUSON APPROACH**

(740) 815-5894  
<http://www.fergusonapproach.com>

**HOMESMART LIFESTYLES**

(480) 390-6683  
 22243 S Ellsworth Rd  
 Queen Creek, Arizona 85142  
<http://www.homesmartlifestyles.com>

**KENNETH JAMES REALTY**

(623) 760-7280  
<https://peggypowellazproperty.com>

**LEA SPALL, NEW TRADITIONS REALTY**

(480) 250-6460  
<http://www.ntraz.com>

**MELANIE NEMETZ TEAM, FOSTERING RELATIONSHIPS KELLER WILLIAMS INTEGRITY FIRST**

(480) 221-3034  
 830 S Higley Rd  
 Gilbert, Arizona 85296  
<https://www.FosteringRe.com>

**NEXT HOME ALLIANCE**

(480) 225-7188  
 22246 S Ellsworth Rd  
 Queen Creek, Arizona 85142  
<https://www.nexthomealliance.com>

**OPENSHAW REAL ESTATE GROUP @ KELLER WILLIAMS INTEGRITY FIRST**

(480) 930-4397  
 830 S Higley Rd  
 Gilbert, Arizona 85298  
[www.herfelopenshaw.com](http://www.herfelopenshaw.com)

**PROSMART REALTY**

(480) 414-8044  
22027 S Ellsworth Rd  
San Tan Valley, Arizona 85142  
<https://gergenrobinson.johnlscott.com>

**ROST REALTY LLC**

(480) 465-1440  
<http://www.rostrealtyllc.com>

**THE LYNCH TEAM AT REAL BROKER AZ**

(480) 570-0600  
9280 S Kyrene Rd, Suite 117  
Tempe, Arizona 85284  
<https://www.thelynchteamaz.com>

**RENOVATIONS****KATY BUILDING AND DESIGN**

(480) 674-8700  
5821 N Placida Del Baron  
Tucson, Arizona 85718  
<http://www.katycompanies.co>

**MARIANO & Co**

(480) 287-4096  
7125 E Southern Ave  
Suite 103  
Mesa, Arizona 85209  
<https://www.marianoco.com>

**ROCK THAT VINTAGE**

(928) 813-6616  
<https://rockthatvintage.com>

**THE EDGE POOLS**

(480) 422-8470  
22246 S Ellsworth Rd  
Queen Creek, Arizona 85142  
<http://www.theedgeremodeling.com>

**THE EDGE REMODELING**

(480) 329-4839  
22246 S Ellsworth Rd  
Queen Creek, Arizona 85142  
<https://theedgeremodeling.com>

**RESATURANTS****FIVE GUYS BURGER & FRIES**

(480) 534-5454  
20784 E Victoria Ln, 109  
Queen Creek, Arizona 85142  
<https://www.fiveguys.com/>

**OLD ELLSWORTH BREWING COMPANY**

(480) 935-2796  
22005 S Ellsworth Rd  
Queen Creek, Arizona 85142  
<http://www.oldebc.com>

**SIDEWALK COFFEE AND BAGEL Co**

(480) 428-5444  
20784 E Victoria Ln Unit 106,  
Queen Creek, AZ 85142  
<https://www.sidewalkcoffeeco.com>

**AHIPOKI**

(480) 540-4062  
21202 S Ellsworth Loop Rd, Suite 110  
Queen Creek, Arizona 85142  
<http://ahipoki.com>

**QUEEN CREEK OLIVE MILL**

(480) 888-9290  
25062 S. Meridian Road  
Queen Creek, Arizona 85142  
<https://www.queencreekolivemill.com>

**BADLANDS BAR & GRILL**

(480) 800 - 4600  
22002 S Ellsworth Rd  
Queen Creek, Arizona 85142  
[badlandsbarandgrill.com](http://badlandsbarandgrill.com)

**CHICK-FIL-A**

(480) 834-0757  
20455 E Rittenhouse Rd  
Queen Creek, Arizona 85142  
<http://www.chick-fil-a.com/queencreek>

**GHETT YO WINGS**

(480) 725-8918  
40975 N Ironwood Road, B104  
San Tan Valley, Arizona 85140  
<http://www.ghettyowings.com>

**PIZZA HUT**

(602) 489-1456  
24871 S Ellsworth Rd Suite 114  
Queen Creek, Arizona 85142  
<https://www.pizzahut.com>

**PORTILLO'S**

(602) 568-3184  
20745 Walnut Rd  
Queen Creek, Arizona 85142  
<https://www.portillos.com/index.html>



**TEXAS ROADHOUSE**

(520) 358-6870  
 5086 S Power Rd  
 Mesa, Arizona 85212  
<https://www.texasroadhouse.com/location/319-gilbert-eaz/menu>

**WHATABURGER**

(480) 228-9330  
 20151 S Ellsworth Rd  
 Queen Creek, Arizona 85142  
<http://whataburger.com>

**WOODBARN BBQ**

(602) 663-1941  
 23670 S Power Rd  
 Queen Creek, Arizona 85142  
<http://www.woodbarnbbq.com>

**RESTORATION****PUROCLEAN OF SAN TAN**

(480) 566-2300  
<http://www.puroclean.com/pst-az>

**RETAIL****BOOT BARN**

(949) 453-4400  
 21102 S Ellsworth Lp Rd  
 Queen Creek, Arizona 85142  
<http://bootbarn.com>

**J'RENEE BEJEWEL**

(619) 850-2011  
 8950 E Germann Rd Suite 38  
 Mesa, Arizona 85212  
<http://onhand.jreneebejeweled.com>

**QC LIVIN**

(480) 223-3809  
<http://www.qclivin.com>

**QUEEN CREEK RUNNING COMPANY**

(602) 502-7076  
 23858 S Power Rd  
 Queen Creek, Arizona 85142  
<http://www.queencreekrunningcompany.com>

**STAPLES**

(480) 358-4979  
 21168 E Ocotillo Rd  
 Queen Creek, Arizona 85142  
<https://stores.staples.com/az/queen-creek>

**SENIOR RESOURCES****ALL ABOUT YOU PLACEMENT LLC**

(480) 498-2277  
<https://allaboutyouplacement.com>

**RIGHT AT HOME**

(480) 900-9077  
 4902 S Val Vista Drive Suite 110  
 Gilbert, Arizona 85298  
[www.queencreekhomecare.com](http://www.queencreekhomecare.com)

**SENIORS HELPING SENIORS EAST VALLEY**

(480) 534-7413  
[www.shseastvalley.com](http://www.shseastvalley.com)

**SHOPPING CENTER****QUEEN CREEK DISTRICT**

(949) 354-2822  
 21181 S. Ellsworth Loop Rd.  
 Queen Creek, Arizona 85142  
<http://burkholderdm.com>

**QUEEN CREEK MARKETPLACE**

(602) 553-2701  
 21398 S Ellsworth LP Rd  
 Queen Creek, Arizona 85142  
<http://www.queencreekmarketplace.com>

**SIGNAGE****YESCO, LLC**

(480) 449-3726  
 6725 W Chicago St  
 Chandler, Arizona 85226  
<http://www.yesco.com>

**SOLAR COMPANY****PROGENY POWER LLC**

(602) 851-1684  
<http://progenypower.com>

**SPECIALTY ITEMS****UNIQUE CRAVES & GIFTS**

(480) 770-4610  
<https://uniquecravesandgifts.com>

**TITLE AGENCY****GRAND CANYON TITLE**

(480) 686-0018  
 22036 S Ellsworth Rd  
 Queen Creek, Arizona 85143  
<http://www.gcta.com>

## TRAVEL AGENT

### BY YOUR SIDE TRAVEL/ DREAM VACATIONS

(480) 436-2281

<http://byyoursidetravel.com>

## TREE & LAWN SERVICES

### SAVATREE

(480) 531-3759

[Savatree.com](http://Savatree.com)

## TROPHY SHOP

### A2Z TROPHY

(480) 335-3819

1170 N Gilbert Rd #126

Gilbert, Arizona 85234

<http://www.awardpro.net>

## UTILITIES

### MEDIACOM COMMUNICATIONS CORP.

(707) 267-6068

1435 E Old West Highway

Apache Junction, Arizona 85119

<https://www.mediacomcable.com>

## SRP

(602) 236-8888

1500 N Project Drive

Tempe, Arizona 85282

<http://srpnet.com>

## VET

### ARISE VETERINARY CENTER

(480) 695-9689

21419 S Ellsworth Rd

Queen Creek, Arizona 85142

<https://www.arisevetcenter.com>

## VIDEO CREATION, ONLINE CLOTHING

### I'M NICE

(480) 215-6696

<https://www.imnice.com>

## WASTE SERVICES

### REPUBLIC SERVICES

(480) 469-8014

3053 N Maple

Mesa, Arizona 85215

<http://www.republicservices.com>

## WEED CONTROL

### EAST VALLEY WEED CONTROL, LLC

(480) 900-5580

<http://www.evweeds.com>

## YOUTH SPORT

### SOUTHEAST FOOTBALL AND CHEER

(480) 201-5040

P.O. Box 282

Queen Creek, Arizona 85142

<http://sepopwarner.com>



[queencreekchamber.com](http://queencreekchamber.com)





Making it easy to connect  
to Arizona sunshine.



Gateway Airport is your gateway to  
the Valley of the Sun with nonstop  
service to more than 45 destinations.  
[gatewayairport.com](http://gatewayairport.com)

ROC # 227821

# Angel Air

COOLING & HEATING, LLC



**PRO**  
PARTNER

## 480-462-5512

[www.AngelAirCooling.com](http://www.AngelAirCooling.com)

**FREE!**  
**SERVICE CALL**  
**WITH REPAIR**

**FREE!**  
**COMFORT PACKAGE**

10 YEAR COMFORT PACKAGE

WITH PURCHASE OF 12 YEAR  
EXTENDED LABOR & PARTS WARRANTY  
WITH PURCHASE OF NEW SYSTEM

- ✓ **UP TO 12 YEAR LABOR & PARTS WARRANTY** (ON NEW SYSTEMS)
- ✓ **0% INTEREST OAC** (UP TO 60 MONTHS ON NEW SYSTEMS)

RESTRICTIONS APPLY. SUBJECT TO CHANGE WITHOUT NOTICE.

MUST MENTION COUPON AT TIME OF BOOKING. ONLY VALID ON FULL SYSTEM RESIDENTIAL INSTALLATION. NOT VALID ON PREVIOUS INSTALLATIONS OR PREVIOUSLY SCHEDULED INSTALLATIONS.  
EXCLUDES MINI SPLIT AND DUCTLESS SYSTEMS, EVAP COOLERS, PORTABLE AND WINDOW A/C SYSTEMS.